

# WEBRelay™ Dual-III

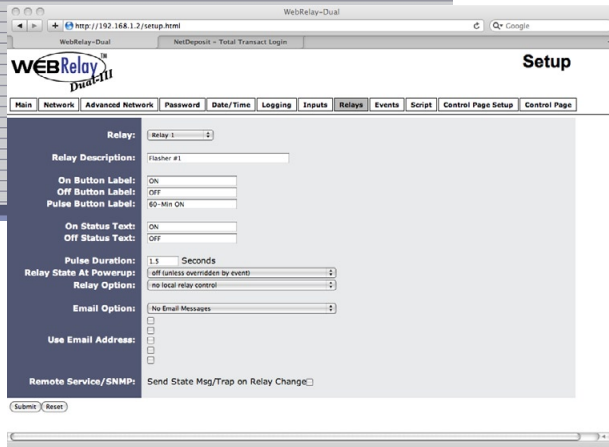
## Applications:

- Road signs/lights
- Work shift bells
- Remote and/or scheduled reset
- Remote lighting control
- Electric door locks
- Electric gate openers
- Energy management
- Remotely control pumps, motors, fans, etc.



## Setup

Event #	Start Date/Time	Period	Count	Relay #	Relay Action	Pulse	Current Date/Time
00 - Light On (Morning)	M 09/28/2009 07:30:00	M Tu W Th F	0	1	turn relay on	1.5 Secs	Tu 09
01 - Light Off (Morning)	M 09/28/2009 08:30:00	M Tu W Th F	0	1	turn relay off	1.5 Secs	Tu 09
02 - Light On (Afternoon)	M 09/28/2009 00:00:00	M Tu W Th F	0	1	turn relay on	1.5 Secs	Tu 09
03 - Light Off (Afternoon)	M 09/28/2009 00:00:00	M Tu W Th F	0	1	turn relay off	1.5 Secs	Tu 09
04 - Labor Day (disable)	M 09/07/2009 01:00:00	Su M Tu W Th F Sa	1	----	disable events	1.5 Secs	
05 - Labor Day (enable)	M 09/07/2009 22:00:00	Su M Tu W Th F Sa	1	----	enable events	1.5 Secs	
06 - Thanksgiving (disable)	W 11/29/2009 23:00:00	Su M Tu W Th F Sa	1	----	disable events	1.5 Secs	W 11
07 - Thanksgiving (enable)	Sa 11/28/2009 01:00:00	Su M Tu W Th F Sa	1	----	enable events	1.5 Secs	Sa 11
08 - Christmas (disable)	W 12/23/2009 18:00:00	Su M Tu W Th F Sa	1	----	disable events	1.5 Secs	W 12
09 - Christmas (enable)	Su 01/03/2010 01:00:00	Su M Tu W Th F Sa	1	----	enable events	1.5 Secs	Su 01
10 - Disabled							
11 - Disabled							
12 - Disabled							
13 - Disabled							
14 - Disabled							
15 - Disabled							
16 - Disabled							
17 - Disabled							
18 - Disabled							
19 - Disabled							
20 - Disabled							
21 - Disabled							
22 - Disabled							
23 - Disabled							
24 - Disabled							
25 - Disabled							
26 - Disabled							
27 - Disabled							
28 - Disabled							
29 - Disabled							
30 - Disabled							



The WebRelay Dual is an exciting addition to our most advanced series of products. It is a web-enabled, programmable relay device for a wide variety of remote control and automation applications. It has two electro-mechanical relays, two optically-isolated inputs, and a wealth of cutting-edge features. The relays can be controlled remotely using a standard web browser or programmed to operate on advanced schedules. The optically-isolated inputs can be used for discrete signal monitoring, relay control, or they can be configured to control the relay contacts of other ControlByWeb devices located elsewhere on the network (or Internet).



www.ControlByWeb.com

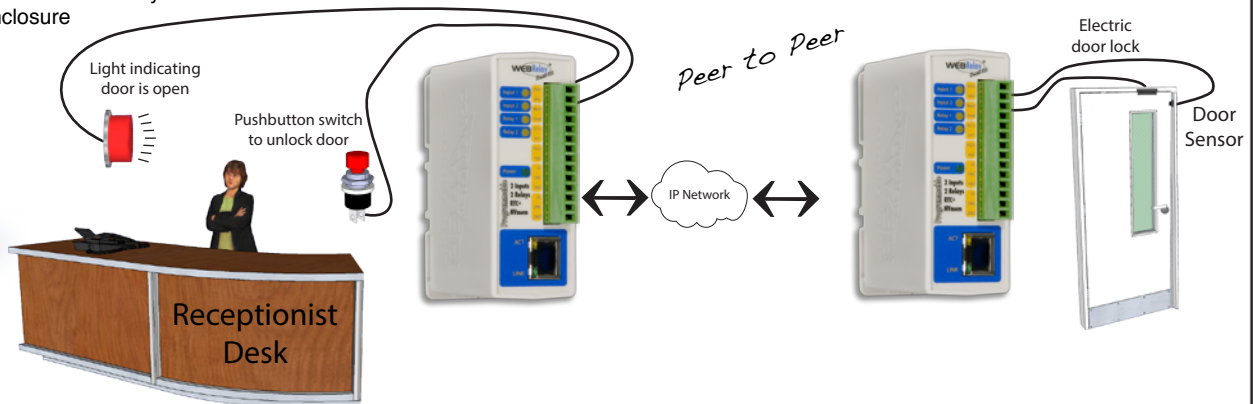
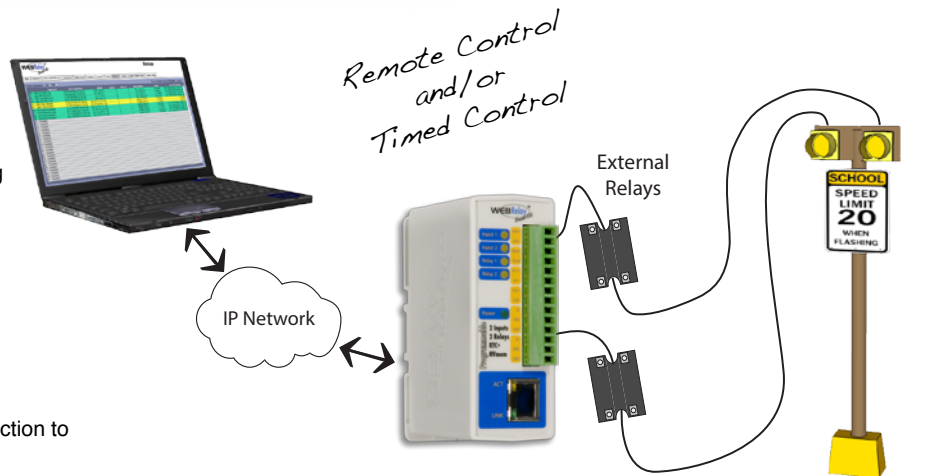
a division of  
Xytronix Research and Design, Inc.  
Logan, Utah, USA

sales@ControlByWeb.com  
(435) 750-5999

# WebRelay Dual offers all the benefits of our latest, third generation product line.

## Features:

- Up to 100 scheduled events
- Full calendar scheduling
- Automatic daylight savings and leap year adjustment
- Synchronize clock with NTP server for precise time keeping
- Capacitor-backed clock
- Two electro-mechanical relays
- Two optically-isolated inputs
- Automatic and manual control
- Control and configure using a web browser
- No software required
- Customizable web-based control page
- Settings stored in non-volatile memory
- BASIC script support for advanced functionality
- Remote services; X-301 can be configured to initiate connection to remote server
- HTTP, SNMP, SMTP, Modbus/TCP, DHCP
- Email Alerts
- Event and periodic logging
- System voltage and internal temperature monitoring
- Removable 14-terminal connector for easy installation
- Rugged Din-rail mount enclosure



## Specifications:

Model X-301-I  
Model X-301-24I

Power Requirements:  
Voltage: 9-28VDC  
Current: 310mA Max

I/O: 2 Relays, 2 Inputs

### Relay Contacts:

Contact Form: SPDT (form c)  
Contact Material: AgSnO2  
Contact Resistance: 100 milli-ohm max  
Max Voltage: 28VAC, 24VDC  
Max Current: 3A

### Optically Isolated Inputs:

Voltage Range (X-301-I model): 3-12VDC  
Voltage Range (X-301-24I model): (11-28VDC)  
Current: 4.7-25mA  
Minimum Hold Time (high or low): 20mS  
Maximum Count Frequency: 25Hz  
Input Functions: Monitor State, Control Relays, Control Remote Relays, Count, High Timer

### Real-Time Clock:

Manual or NTP (Network Time Protocol) setup  
NTP Sync Period: Once, Daily, Weekly, On Powerup  
Auto Daylight Savings Adjustment  
Battery Backed: Internal Capacitor Backed

Network: 10/100 Base-T Ethernet Port

### Connectors:

Power/Inputs: 14-Position Removable  
Network: 8-pin RJ-45

### LED Indicators: 7

-Module Powered  
-Relay Coil Energized 1-2  
-Inputs 1-2

### Physical:

Operating Temperature: -22° to 149°F  
(-30° to 65°C)

### Size:

1.41in (35.7mm) wide  
3.88in (98.5mm) tall  
3.1in (78mm) deep (not including connector)  
Weight: 5.5oz (156 grams)

### Enclosure Material: Lexan 940

Flame rating UL94 V0

### Monitor/Control:

Web Browser, XML, Modbus/TCP, SNMP, Remote Services (Web Services), and Data Logging

### Logging:

Storage: Nonvolatile Flash  
Buffer Architecture: Circular Buffer  
Log file size: 200K (max 4655 logs)  
Unlimited data storage from Web Monitoring Service

### Advanced Features:

BASIC interpreter  
Remote services  
Avoid most firewall issues with outbound connection to Web Services

### Password Settings:

Password protection on setup page: Yes  
Password protection on control page: Optional  
Password Encoding: Base 64  
Max password length: 13 characters