

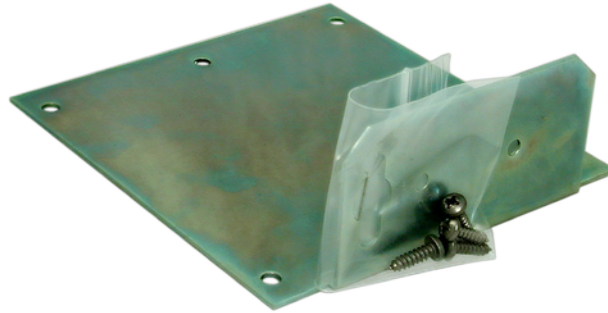
WMA-2001, WMA-3002

ACCESSORIES



Description

The WMA-2001 and WMA-3002 are designed to provide a stable platform for FiberPlex's fiber optic isolators and interface converters. The wall mount adapter attaches to either a horizontal or vertical flat surface and provides a convenient termination point which protects both the fiber optic cable and the fiber optic isolator from damage.



Wall Mount Adapter

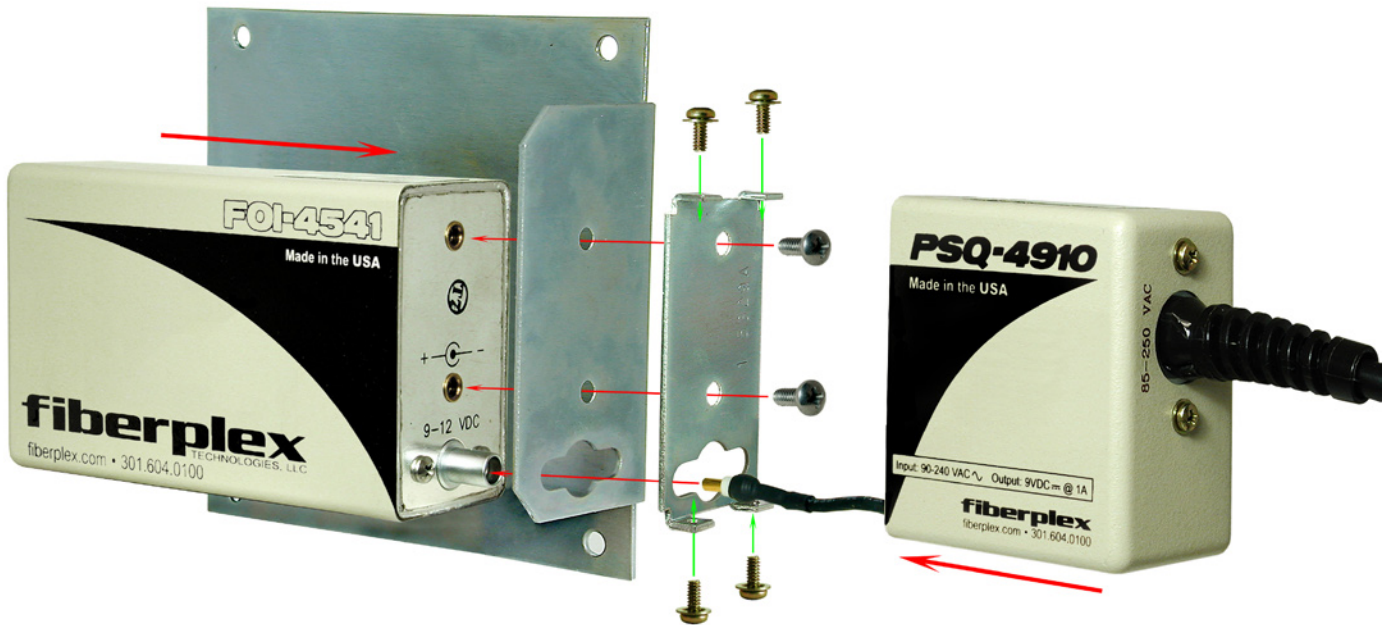
Features:

- The fiber optic isolator and power supply can be attached to or removed from the Wall Mount Adapter while it is mounted to a flat surface.
- The optical patch on the WMA-2001 is linked to the isolator via a 1 foot long fiber optic cable.

Installation Instructions

Sandwich the WMA between the FOI unit and the PSQ Mounting Bracket. Attach with 2 screws through both plates into FOI. Plug in power from PSQ and attach PSQ can to PSQ bracket using 4 screws.

Wall Mount Adapter	Fiber Optic Isolator
WMA-2001 (includes optical patch)	FOI-2xxx FOI-3xxx FOI-4xxx
WMA-3002	FOI-2xxx FOI-3xxx FOI-4xxx



Specifications

	Width	Height	Length	Unit
WMA-2001	1.5 (38)	4.25 (108)	4.5 (114)	in (mm)
WMA-3002	1.5 (38)	4.5 (114)	5 (127)	in (mm)

Ordering Info

WMA-2001 - Wall Mount Adapter for use with FOI Isolators, Includes Optical Patch

WMA-3002 - Wall Mount Adapter for use with FOI Isolators