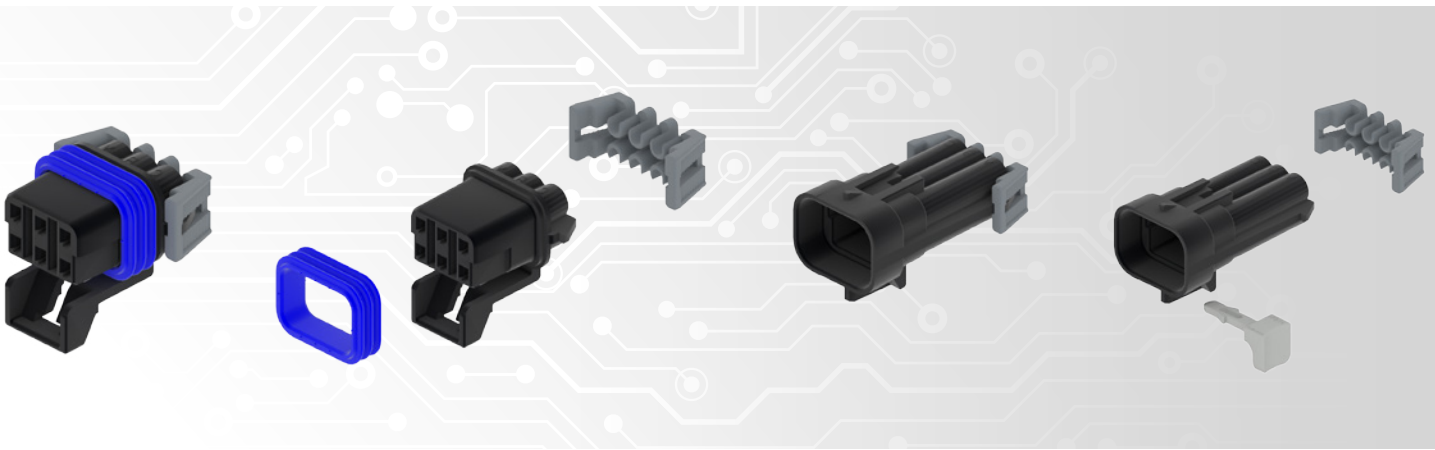




# METRI-PACK (M/P) 150 SEALED SERIES



## BENEFITS

- Field-proven systems provide exceptional performance, confirmed over many years on global applications
- The comprehensive product range supports design flexibility and application versatility
- SAE J2030-compliant with premium silver interface plating for superior commercial vehicle performance

## FEATURES

- Connector Position Assurance (CPA) and Terminal Position Assurance (TPA) provide superior connection reliability
- Triple-rib peripheral silicone seal provides exceptional protection against temperature extremes, chemicals and abrasion
- Connectors are compatible with global standard male blade dimensions for seamless integration
- Both high-current and low-energy circuits are supported, for maximum electrical adaptability
- Robust terminals assure correct alignment and connection integrity

## TECHNICAL CHARACTERISTICS

<b>Temperature Range</b>	-40°C - 125°C
<b>Vibration Class</b>	SAE J2030 Heavy-Duty Electrical Connector Standard (with silver interface plating) - up to 20G
<b>Sealing Class</b>	SAE J2030 Heavy-Duty Electrical Connector Standard - S3 - High Pressure Spray

## AVAILABLE CONFIGURATIONS

<b>Cavity count (ways)</b>	2, 3, 4, 5, 6, 8, 10
<b>Cavity Configurations</b>	150 (1.5 mm)
<b>Genders</b>	F, M
<b>Sealing Type</b>	Cable-sealed
<b>Centerline Spacing</b>	6 mm
<b>Indexes</b>	Various
<b>Terminal Position Assurance (TPA) Type</b>	TPA or conduit TPA
<b>Connector Position Assurance (CPA)</b>	CPA (optional)

## APPLICATIONS

Body and chassis, engine, commercial vehicles (trucks), marine, construction, agriculture, robotics

## TERMINAL COMPATIBILITY

Aptiv Metri-Pack (M/P) 150 Sealed Series

## REPRESENTATIVE PART NUMBERS

	Cavity Count	Blade Size (mm)	Gender	Dimensions (L x W x W in mm <sup>2</sup> )	Part Number	Index	Color	Other Versions Offered	TPA	Conduit TPA (Optional)	CPA
INLINE CONNECTIONS	2	1.5	F	26.0 x 18.6 x 23.0	12052641	A	Black	12052644 GRA LT	12052634	15327799	
	3	1.5	F	26.0 x 22.3 x 29.0	12110293	A	Black		12052845	10740397	
	4	1.5	F	26.0 x 21.8 x 35.0	12162144	A	Black		12047948	10719337	
	5	1.5	F	27.4 x 27.5 x 29.0	12146045	A	Natural		12092844		
	6	1.5	F	27.4 x 28.7 x 29.0	12052848	A	Black		12052850		
	8	1.5	F	27.4 x 28.8 x 35.2	12047937	A	Black	7F 12047938 GRA LT 5F 12052600 GRA MD	12066304		
	10	1.5	F	26.0 x 28.4 x 42.2	12065425	A	Black	12065426 GRA MD	12124264	10719339	
INLINE CONNECTIONS	2	1.5	M	45.5 x 18.6 x 23.0	12162000	A	Black	12162343 GRA LT	12052634	15327799	
	3	1.5	M	45.5 x 22.0 x 29.0	12129615	A	Black		12052845	10740397	12020833
	4	1.5	M	45.5 x 22.2 x 34.6	12162102	A	Black		12047948	10719337	12020833
	5	1.5	M	45.5 x 27.0 x 29.0	12103974	A	Natural		12092844		12020833
	6	1.5	M	45.5 x 28.1 x 29.0	12124107	A	Black		12052850		12020833
	8	1.5	M	44.6 x 27.3 x 35.2	12047931	A	Black	7M 12047933 GRA LT	15324525		12020833
	10	1.5	M	44.6 x 27.0 x 42.2	12045808	A	Black	12052189 GRA LT	12124264	10719339	12020833
DEVICE CONNECTIONS	2	1.5	F	26.0 x 12.1 x 24.2	12162017	A	Med. Gray		12124824		
	4	1.5	F	26.0 x 24.8 x 22.3	12065298	A	Black		12066176		
	5	1.5	F	26.0 x 28.0 x 27.4	12077591	A	Black		12052898		

## REQUIRED CABLE SEALS & OPTIONAL CAVITY PLUG

Type	Applicable Cable Outside Diameter (mm)	Color	Part Number
Cable Seal	2.85-2.03	Dark Red	15324973
Cable Seal	2.15-1.6	White	15324976
Cable Seal	1.70-1.2	Blue	15324974
Cable Seal	1.009-0.995	Tan	12084193
Cavity Plug	5.75	Dark Red	12059168