

DATALIFT DL500

Heavy duty lift for Data Centre servers

Compliant with European and international safety standards

Ensure the safety of your team to handle extra heavy loads

The heavy duty **DL500** is designed to easily lift, move and install servers and IT equipment anywhere in the data centre up to heights of **2.4 metres** with a centre load capacity of up to **500 kg (1100 pounds)**.

This server lifter is designed and manufactured in Finland (**ISO 9001 and ISO 14001**) for excellence in quality and environmental management systems.

✓ Certified for Safety & Compliance

Built to uphold the highest safety benchmarks, the lifter complies with both European and international regulations, including:

- **Directive 2006/42/EC** (Machinery Directive)
- **EN ISO 3691-5:2020 11** (Industrial trucks – Safety requirements for manually operated trucks)
- **EN ISO 12100:2010** (General principles for design – Risk assessment and risk reduction)

This versatile server lifter provides your team with effortless racking of IT equipment for migrations and every day use. The datalift helps to prevent human injury and damage to expensive IT equipment, reducing downtime that can occur as a result of accidents.



IXOLIFT®

MAINTENANCE-FREE

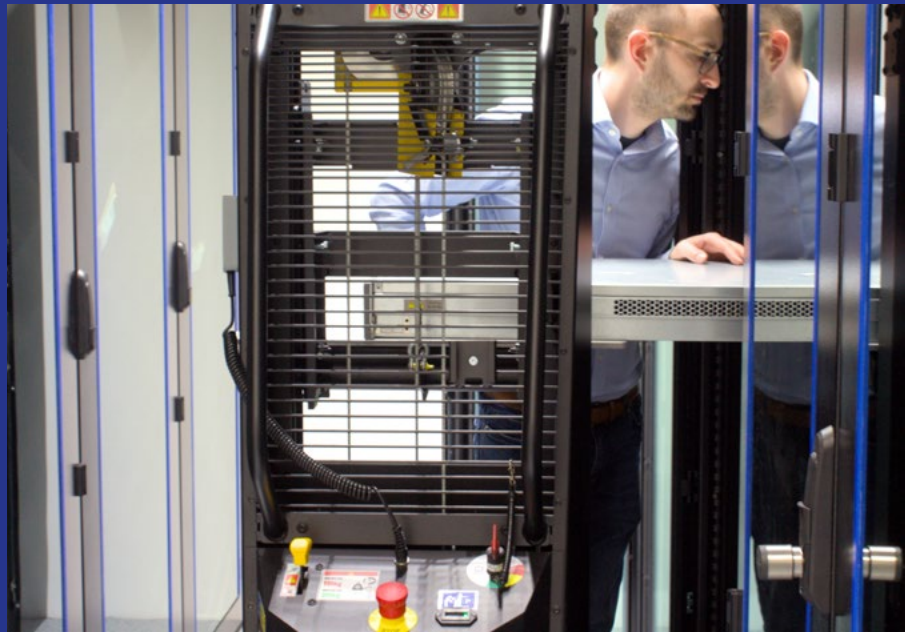
Our datalifts have an innovative design, ensuring a cleaner, safer, and more efficient operation – especially critical in sensitive environments like data centres.

INTUITIVE TO USE

The dual mast design allows for viewing through the lift whilst moving it, helping to avoid collisions. The side loading capabilities allow the operator to flexibly work from the left- or the right-hand side of the unit. The remote control allows platform movement regardless of the operator's position.

COMPACT SIZE

The DL500 fits easily into tight spaces, through doorways and narrow cabinet row aisles. A single operator can operate and navigate the load and rotate on its own axis providing exact manoeuvrability for effective installations.



All mandatory safety features



HIGHLIGHTS

Large platform for lifting extra heavy server equipment

Platform table slides 175 mm to either side for side loading

Maximum height of 2.40 m with 250 kg and up to 1.5 m with 500 kg

Remote control enables operator to see the load from both sides of platform

Emergency stop button easily accessible on the control panel

Lever on control panel locks and releases front wheels for accurate navigation

Insulated safety stop for overhead obstacles

Wide break bar allows for easy activation even when wearing large PPE boots

Eco-friendly, maintenance-free gear box

Non-marking polyurethane wheels on floor

Designed and manufactured in Finland



Wide brake lever



Emergency stop button



Remote control



Precision table



Clear forward view while moving

TECHINICAL SPECIFICATIONS

Centre load capacity

Lifting height

Minimum platform height

Platform size

Brake lever width

Weight (unloaded)

System voltage

Lifting cycles

Input voltage for charger

CE marking

DL500

500 kg (1100 lbs)

2.40 m

1.35 m

0.61 x 0.42 m

0.36 m

235 kg

24 V

120 full cycles with 150 kg, 80 cycles with 500 kg

180-265 VAC, 45-65 Hz

EN ISO 3691-5:2020 11, EN ISO 12100:2010

Comparing IXOLIFT's DataLifts

DataLift	DL175 ML	DL200 FL	DL250	DL500
Maximum centre load	175 kg / 385 lbs	200 kg / 440 lbs	250 kg / 550 lbs	500 kg / 1100 lbs
Lifting height: 1 - 52 U				
Frequent lifting				
Installing units deeper within the rack				
No charging required				
Fits through standard doors & elevators				



**Our mission is to save lives, prevent injuries from low heights,
and improve productivity by reducing time away from work.**

IXOLIFT's data centre products are designed to ensure safety in data centre operations and enhanced work efficiency for transportation, installations and removal of heavy server and IT equipment.

**Safety doesn't just come first
Safety is IXOLIFT's mission
We strive in everything we do to create
safer, better working conditions for
people working at low heights.**

Designed and manufactured by
IXOLIFT LTD | Kalkkimäentie 2 FI-03100 Nummela Finland |
www.ixolift.com | +358 20 741 5010

Subject to change without notice. V100.2025