

# BG-12GCSA

Direktronik Art 20124457

**USB-C 12G-SDI Video Capture Card Box with Scaler,  
HDMI 2.0/12G-SDI Loop Out and Audio**

## User Manual





***DIREKTRONIK***

Direktronik AB tel. 08-52 400 700 [www.direktronik.se](http://www.direktronik.se)



## TABLE OF CONTENTS

Statement	4
Safety Precaution	4
Introduction	5
Features	5
Packing List	5
Specifications	6
Operation Controls and Functions	7
Connection Diagram	8
Video Streaming	9
Troubleshooting	18
USB Pin Definition	18
Tech Support	19
Limited Product Warranty Terms	19
Mission Statement	20
Copyright	20



## Statement

---

Please read these instructions carefully before connecting, operating, or configuring this product. Please save this manual for future reference.

## Safety Precaution

---

- To prevent damaging this product, avoid heavy pressure, strong vibration, or immersion during transportation, storage, and installation.
- The housing of this product is made of organic materials. Do not expose to any liquid, gas, or solids which may corrode the shell.
- Do not expose the product to rain or moisture.
- To prevent the risk of electric shock, do not open the case. Installation and maintenance should only be carried out by qualified technicians.
- Do not use the product beyond the specified temperature, humidity, or power supply specifications.
- This product does not contain parts that can be maintained or repaired by users. Damage caused by dismantling the product without authorization from BZBGear is not covered under the warranty policy.
- Installation and use of this product must strictly comply with local electrical safety standards.



## Introduction

---

The BG-12GCSA is a USB-C 12G-SDI video capture device with a scaler, HDMI 2.0/12G-SDI loopout, and audio that provides a professional way to capture SDI video signals. It adopts a USB 3.1 Type-C Gen 1 (USB 3.0) interface, which allows for high-speed data transmission. Additionally, the SDI input and loopout can support up to 4K2K@60.

Users can connect the BG-12GCSA to a 4K2K@60 source and capture Ultra HD (4K2K@30) video. Furthermore, this unit can capture and display original, uncompressed SDI video, with a more realistic color rendition. The BG-12GCSA uses large volume image buffer technology, which effectively avoids video tearing. The high sampling rate and accuracy ensure that the captured videos have a high degree of sharpness, rich details, and fewer color edges.

## Features

---

- SDI video and audio streams over USB 3.1 Type-C Gen 1
- UVC1.0/1.1/1.5
- Video resolutions up to 4K2K@30/1080P@120 (Video stream over USB-C)
- HDMI up to 4K2K@60
- SDI input & loopout resolutions:  
720p@50, 720p@59.94, 720p@60, 1080i@50, 1080i@59.94, 1080i@60, 1080p@23.97, 1080p@24, 1080p@25, 1080p@29.97, 1080p@30, 1080p@50, 1080p@59.94, 1080p@60, 4K2K@23.98, 4K2K@24, 4K2K@25, 4K2K@29.97, 4K2K@30, 4K2K@50, 4K2K@59.94, 4K2K@60,
- Bit Rate: 11.88 Gbps, 11.88/1.001 Gbps, 5.94 Gbps, 5.94/1.001 Gbps, 2.97 Gbps, 2.97/1.001 Gbps, 1.485 Gbps, 1.485/1.001 Gbps, 270 Mbps
- Auto 12G/6G/3G/HD-SDI detection
- Deinterlacer & scaler (upscale to 1080p@120Hz)
- Mic in allows embedding to SDI audio
- SDI audio extraction
- Volume control knobs to adjust the MIC/Headphone volume.
- Auto-detection on video format to ensure plug-play operations
- Supported operating systems: Windows 7/8.1/10/11, Mac, & Linux OS
- Compatible with most 3rd party software such as OBS Studio and AMCap
- USB 3.1 Gen 1 (RGB/YUY2/NV12) (capture up to 4K2K@30) and USB 2.0 (YUY2/NV12) (capture up to 1080@15)
- Low Latency (3~4ms at 1080P)
- USB-C reversible

## Packing List

---

- 1x BG-12GCSA
- 1x USB 3.0 A to C Cable (host to device)
- 1x User Manual



## Specifications

Model Name		BG-12GCSA
<b>Technical</b>		
Role of usage		Video Capture Device
Input/loopout Video bandwidth		[SDI] 11.88 Gbps, 11.88/1.001 Gbps]
Output bandwidth		Up to 5 Gbps (USB-C)
Video support(USB-C)		Up to 4K2K@30/1080P@120
Video support(Loopout)		Up to 4K2K@60
Input Video Support		[12G-SDI] 4K2K @50/59.94/60Hz [6G-SDI] 4K2K @23.98/24, 25, 29.97, 30Hz [3G-SDI] 1080p50/59.94/60 [HD-SDI] – 720p @50/59.94/60Hz, 1080i @50/59.94/60Hz, 1080p @23.98/24/25/29.97/30Hz
Audio Input		SDI Embedded Audio & Stereo audio Input
Audio Support		HDMI output/ SDI loopout up to 7.1ch, Toslink up to 5.1ch, Stereo audio up to 2ch
Recording Video Format		RGB/YUY2/NV12 (USB3.1 Gen 1), YUY2/NV12 (USB2.0)
ESD protection		Human body model — ±15kV [air-gap discharge] & ±8kV [contact discharge]
PCB stack-up		4-layer board [impedance control — differential 100Ω; single 50Ω]
Cable equalization		[12G-SDI] Input up to 30m; Loopout up to 70m [6G-SDI] Input up to 70m; Loopout up to 120m [3G-SDI] Input up to 200m; Loopout up to 200m
Firmware update		USB-C Port
Input		1x BNC(SDI) + 1x 3.5mm
Output		1x USB-C + 1x HDMI 1x BNC(SDI) + 1x 3.5mm + 1x Toslink
HDMI connector		Type A [19-pin female]
USB connector		USB 3.1 Type C (SuperSpeed USB)
Software compatibility (not a complete list)		OBS Studio (Windows, Linux, MAC), AMCap (Windows), Potplayer (Windows), VLC (OS X, Linux), XSplit Broadcaster (Windows), Skype (Windows, OS X), Zoom (Windows), Hangout (Windows), TeamViewer (Windows)
OS Support		Windows 7 /8.1 /10/11, Mac and Linux OS
<b>Mechanical</b>		
Housing		Metal enclosure
Dimensions [L x W x H]	Model	137 x 81 x 30mm [5.4" x 3.2" x 1.2"]
	Package	198 x 137 x 74mm [7.8" x 5.4" x 2.9"]
	Carton	420 x 400 x 300mm [1'4"x 1'3" x 11.8"]
Weight	Model	207g [7.3 oz]
	Package	492g [1 lbs]
Power supply		5V DC
Power consumption		8 Watts [max]
Operation temperature		0~40°C [32~104°F]
Storage temperature		-20~60°C [-4~140°F]
Relative humidity		20~90% RH [no condensation]



## Operation Controls and Functions

### Front and Rear Panel

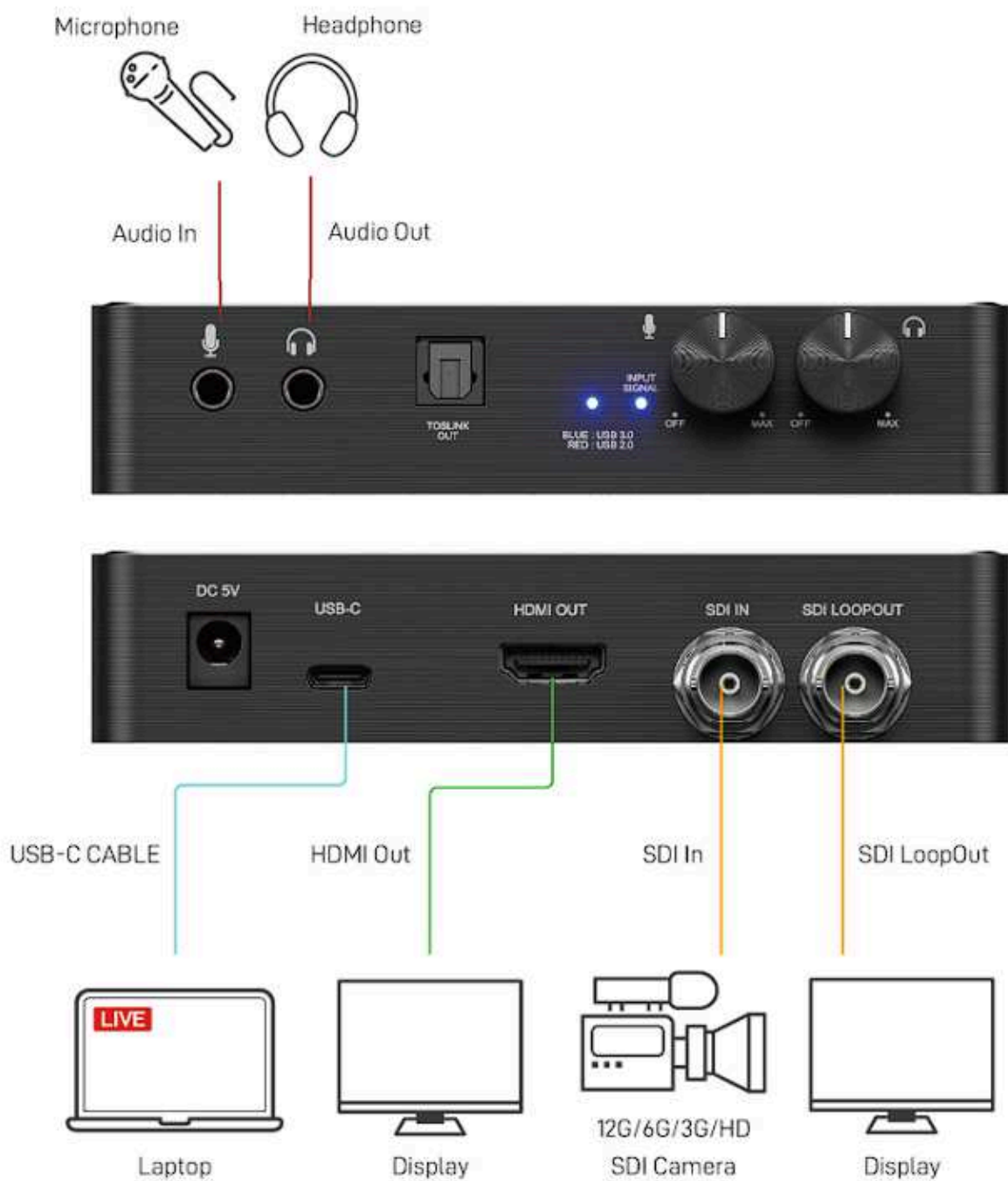


No.	Name	Function Description
1	<b>STEREO AUDIO IN</b>	Connect to an analog stereo audio source
2	<b>STEREO AUDIO OUT</b>	Extract audio from SDI input
3	<b>TOSLINK OUT</b>	Extract audio from SDI input
4	<b>LED INDICATOR</b>	USB-C LED signal indicator [Red] The device is connected to the USB 2.0 port on the host [Blue] The device is connected to the USB 3.0 port on the host
5	<b>LED INDICATOR</b>	SDI input signal indicator LED
6	<b>STEREO AUDIO IN VOLUME KNOB</b>	Adjust the stereo audio in sound level
7	<b>STEREO AUDIO OUT VOLUME KNOB</b>	Adjust the stereo audio out sound level
8	<b>+5V DC</b>	5V DC power jack
9	<b>USB-C OUT</b>	Connect to a USB host
10	<b>HDMI OUT</b>	Connect to a HDMI display
11	<b>SDI IN</b>	12G/6G/3G/HD-SDI Input
12	<b>SDI LOOPOUT</b>	12G/6G/3G/HD-SDI loopout

\*If you plug the capture device into the USB 3.0 port on the host, but the LED indicator lights up red, it means that the current device is working at the USB 2.0 specification. There could be an issue with the USB cable or USB port.



## Connection Diagram







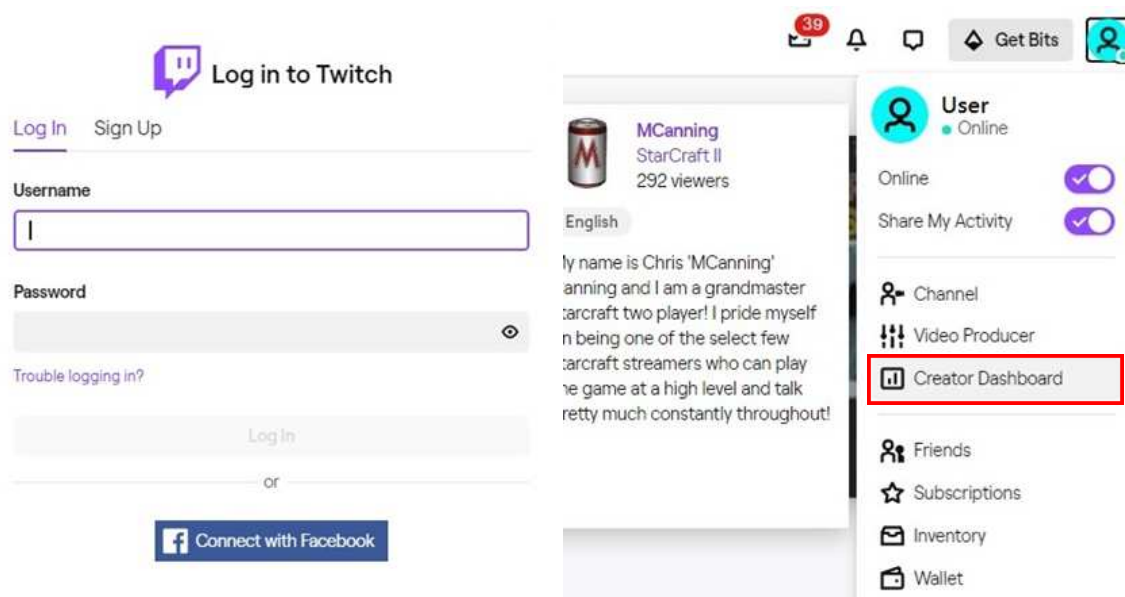
## Video Streaming

### Create a Video Streaming

Users can create video streams on their streaming service platform. The steps below show how to complete video streaming settings from Twitch and YouTube.

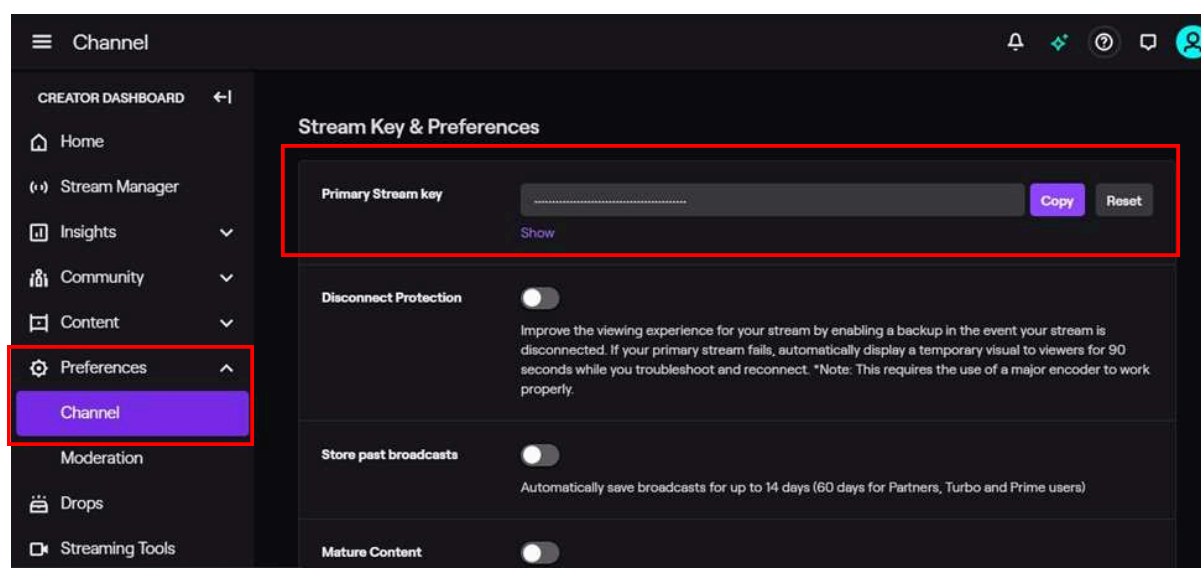
#### Twitch

1. Browse to the Twitch website (<https://www.twitch.tv/>) and log in. Next, select "**Creator Dashboard**" from your account drop-down menu at the top right of the screen.



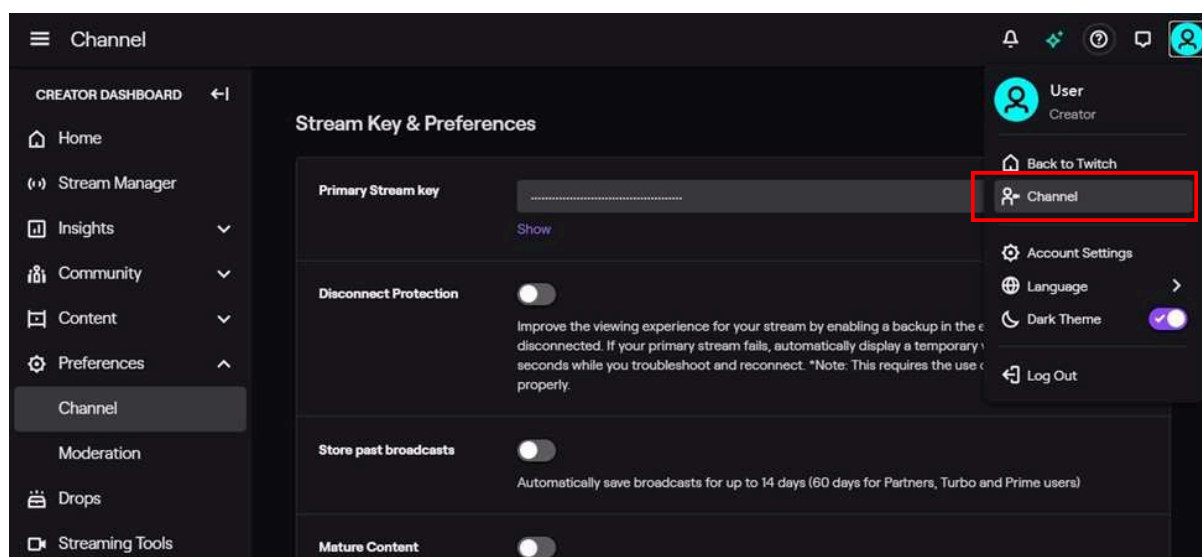
2. Find "**Preferences**" in the left menu, and click "**Channel**", then you will see "**Primary Stream key**" on the screen. Copy the "**Primary Stream key**" and paste it into the "**Stream Key**" field in the OBS, then click "**Start Streaming**" in the software.

\* Please refer to steps 4-6 of the OBS software control program.

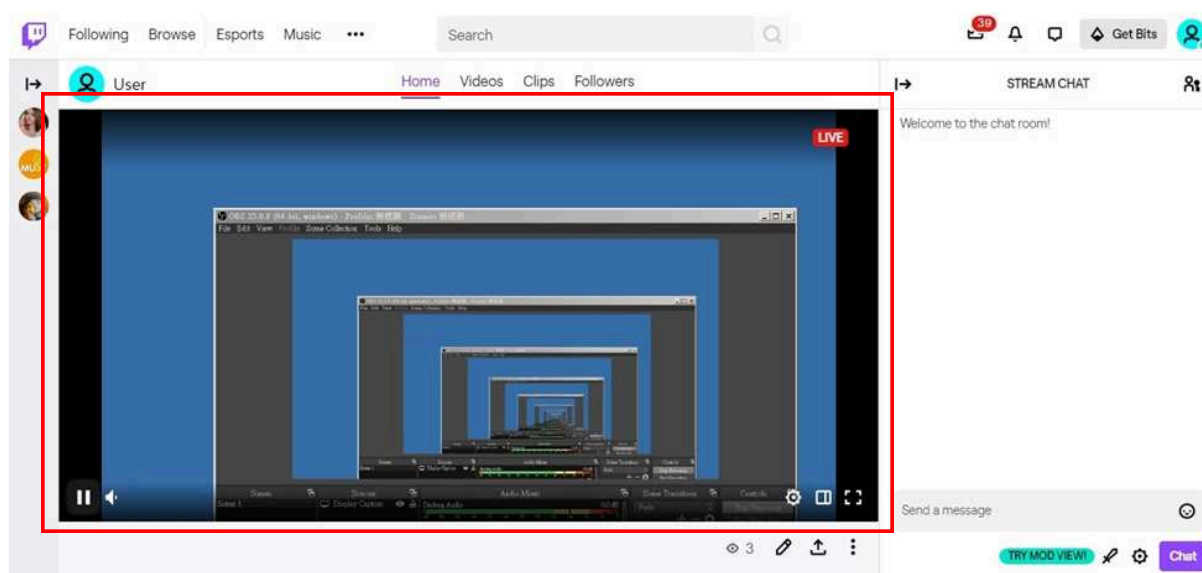




- Go back to Twitch and select "**Channel**" from your account drop-down menu.



At this point, you will see the players live stream..

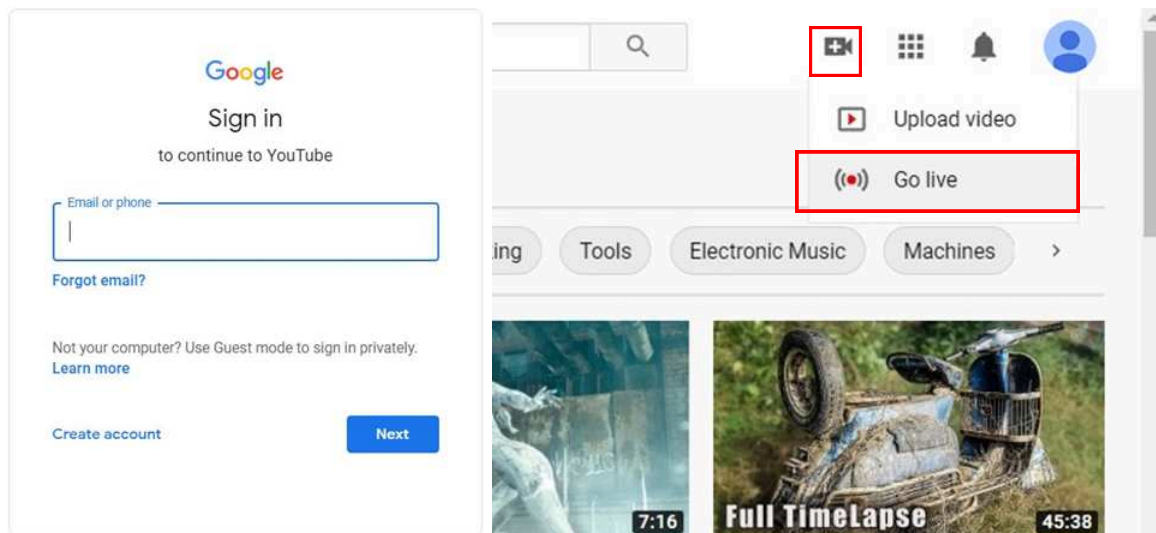




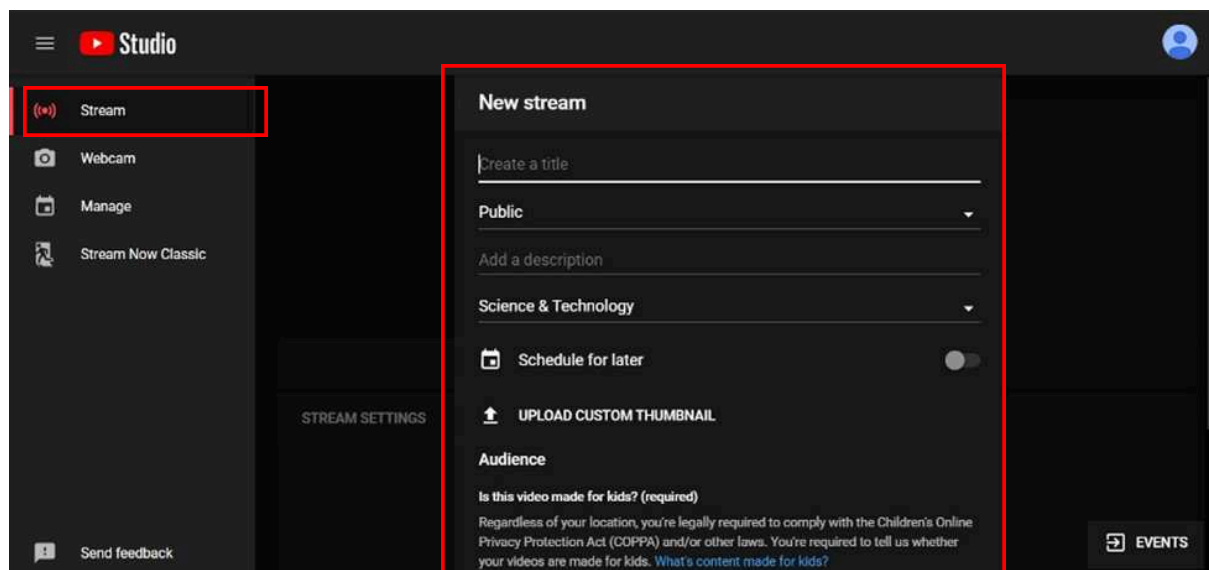
## YouTube

1. Browse to the YouTube website (<https://www.youtube.com/>) and log in. Next, click "**Go live**" from the "**Create**" icon menu at the top right of the screen.

\* If you are using YouTube for the first time to create a video stream, you need to wait 24 hours to enable the function.



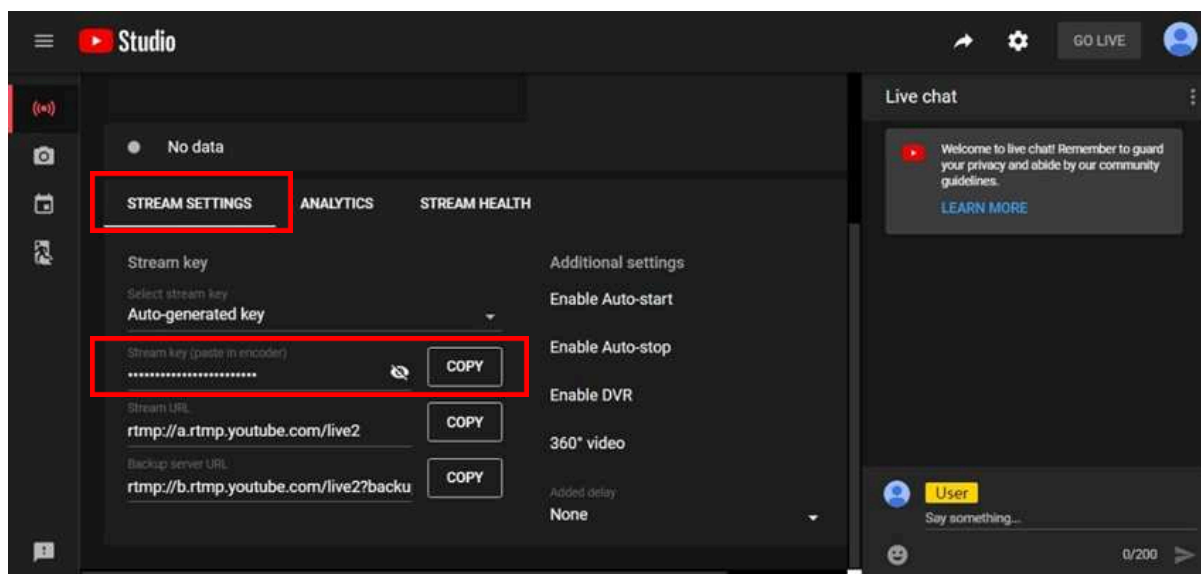
2. Click "**Stream**" in the left menu, and fill in the relevant information for the live video to create a new stream.



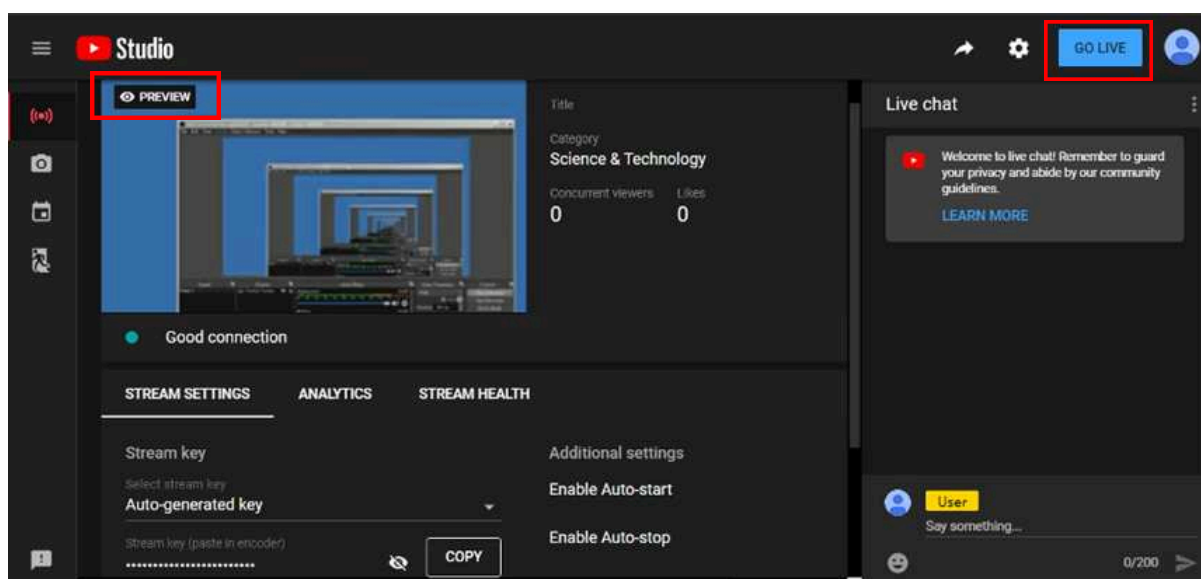


- You will see the **"Stream key"** from the **"STREAM SETTINGS"** below. Copy the **"Stream key"** and paste it into the **"Stream Key"** field in the OBS, then click **"Start Streaming"** in the software.

\* Please refer to steps 4-6 of the OBS software control program.

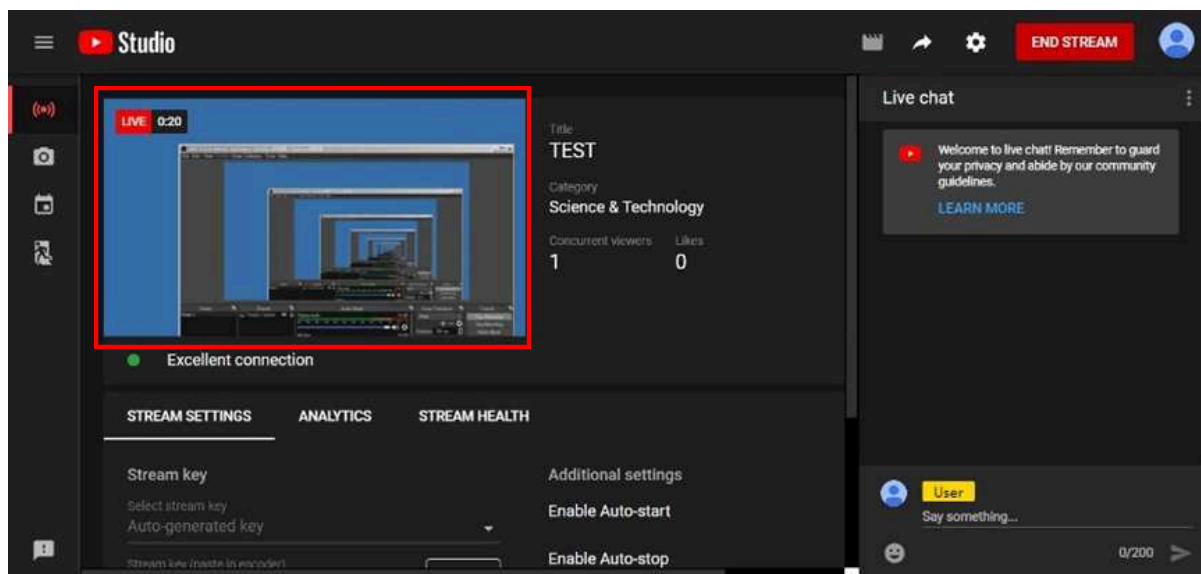


- Next, go back to YouTube, and then wait for 30-60 seconds, the player will display the live preview. At the same time, the **"GO LIVE"** button at the top right will turn blue, please press this button.





5. The player on YouTube will start live streaming.



## Stream and record videos with OBS

OBS is a popular USB capture freeware and has excellent compatibility. Please start with OBS if users are not familiar with USB capture devices.

### Download the software

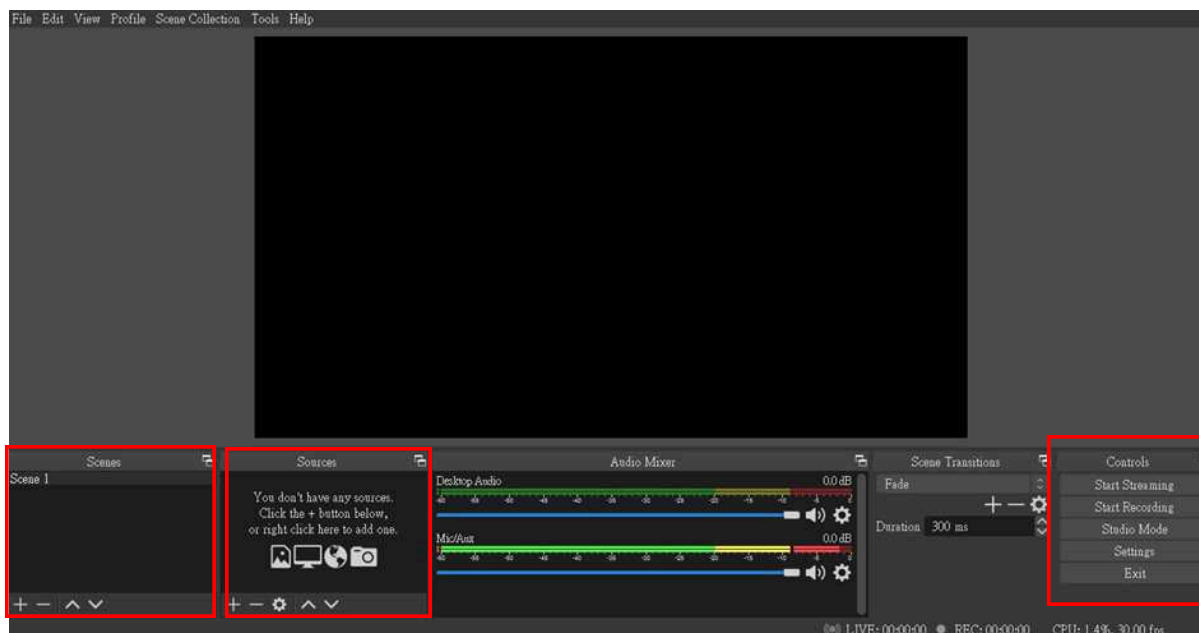
Browse to the download page of the OBS official website (<https://obsproject.com/download>), then select the suitable computer operating system and start downloading.



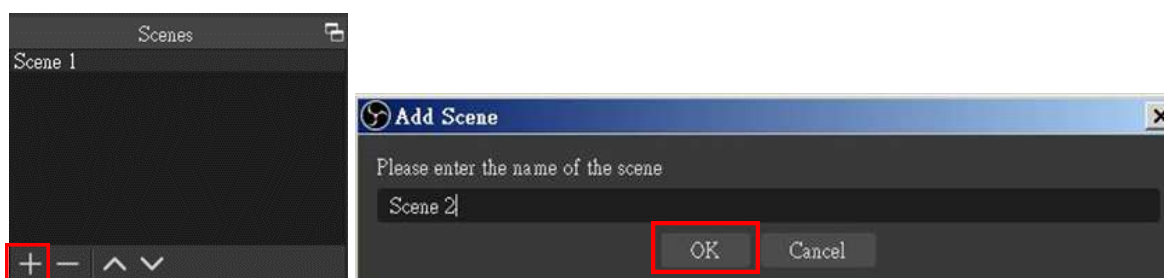


### Start the software control program

After downloading the software, please open it and follow the below steps to complete the video streaming settings.



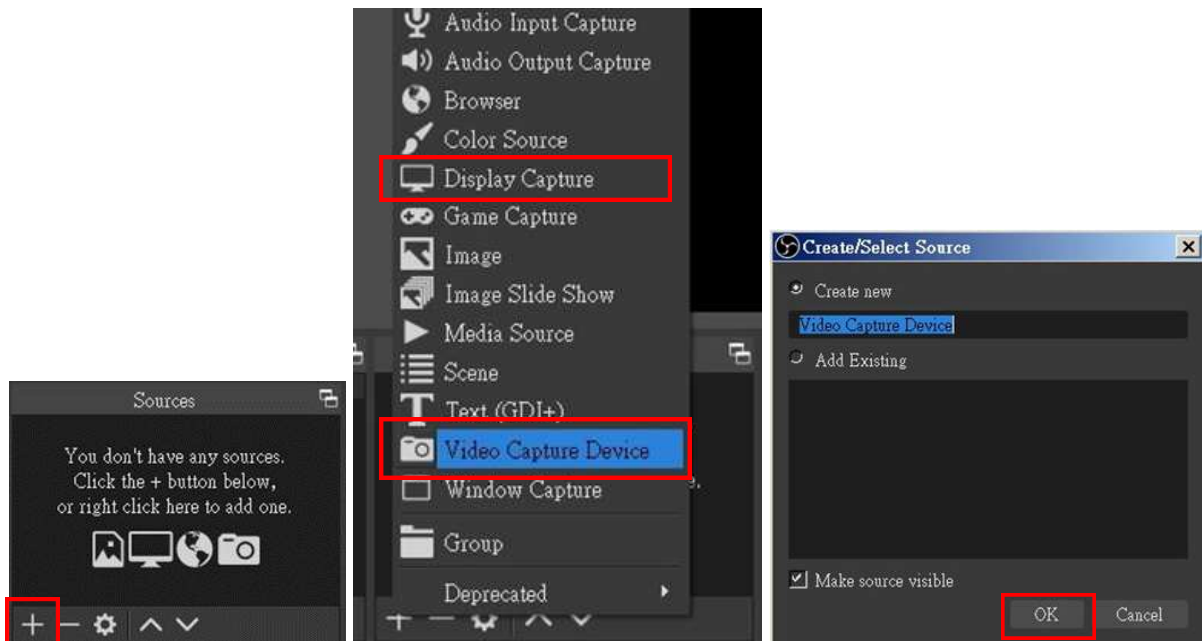
1. First, find the "**Scenes**" window, click "+" in the lower left corner, and then enter the name of the scene to create a new scene.



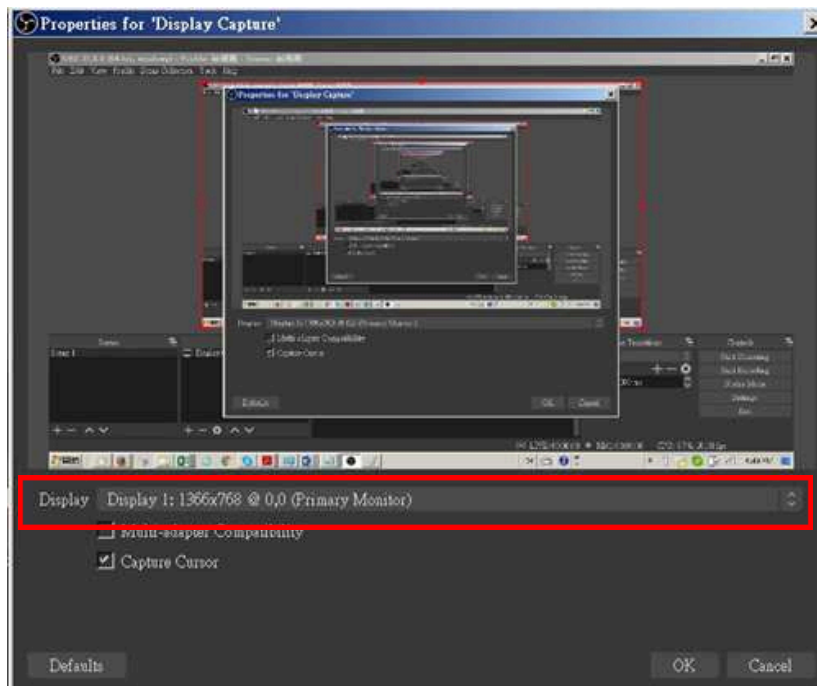


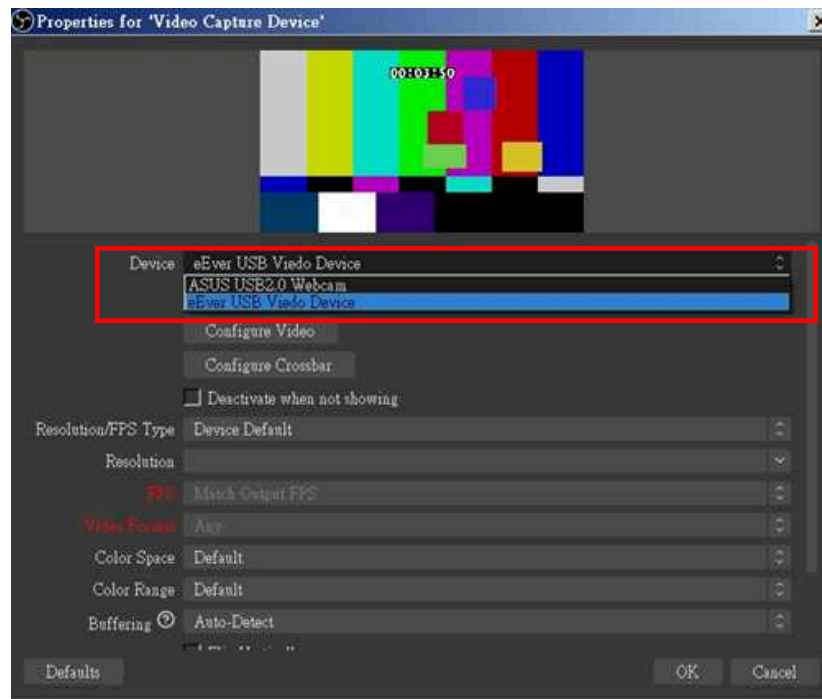


- Find the **"Source"** window, click **"+"** in the lower left corner, and then select **"Display Capture"** or **"Video Capture Device"** to create a new source.

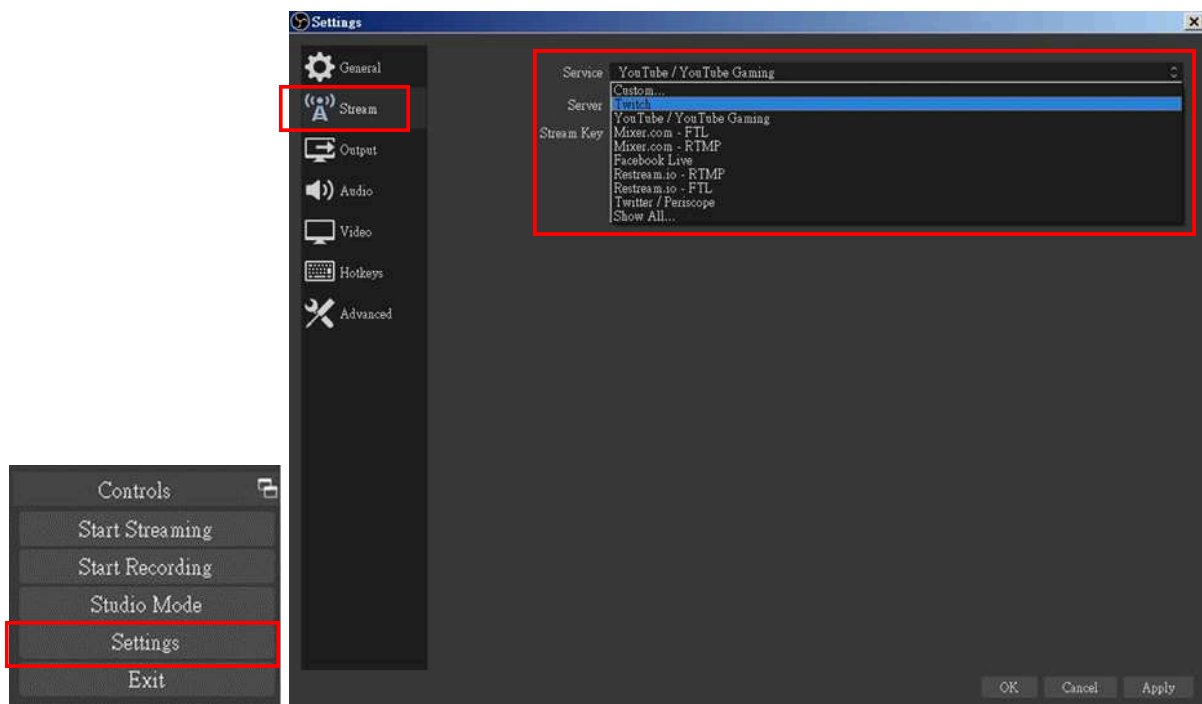


- Next, you can set display capture properties. If you select **"Display Capture"** in step 2, you can select the primary monitor or other extended monitor as the display source. If you select **"Video Capture Device"** in step 2, you can select a USB video device as the display source. After all settings are completed, click **"OK"**.





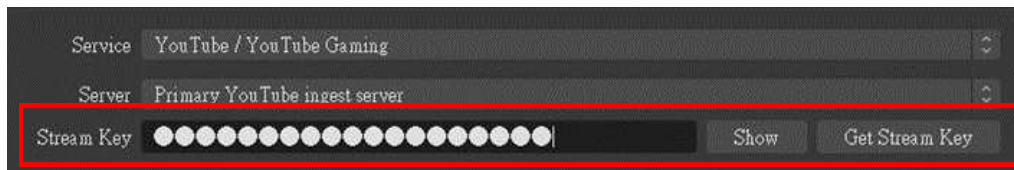
4. Click **"Settings"** and then select **"Stream"** to perform streaming settings. Users can choose service providers, including Twitch, YouTube, etc.







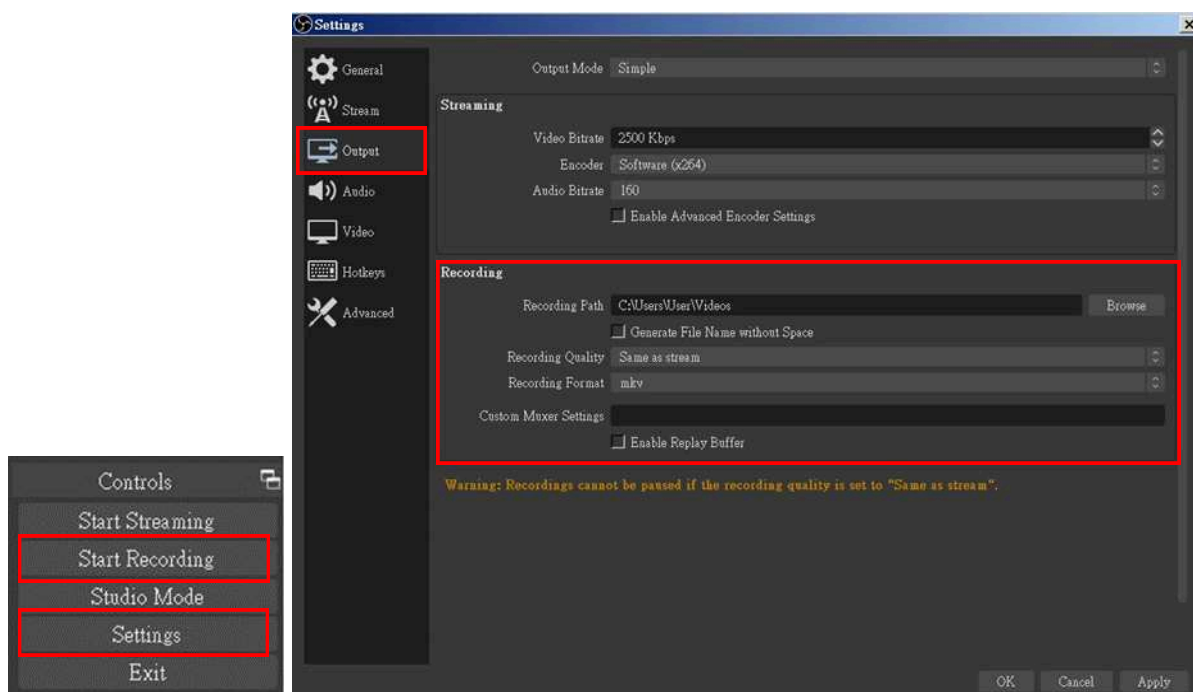
- Paste the stream key provided by the service provider into the **"Stream Key"** field, then click **"Apply"** and **"OK"** after setting. In addition, users can click **"Get Stream Key"** at this step to open the service provider website.



- Please click **"Start Streaming"**. At this time, the screen after clicking **"Start Streaming"** will be displayed in the live video.



- On the other hand, users can also click **"Start Recording"** to record videos with OBS. Besides, you can click **"Settings"** and then select **"Output"** to set **"Recording Path"** and **"Recording Format"**.



The procedures the manual demonstrates are based on the interface that each website provides at the time when the manual is written. Please note that the above procedures are subject to change due to platform updates.



## Troubleshooting

Most of the issues experienced by users are not from the USB capture device itself, but from the sophisticated software and hardware combination of PC or laptop. Please follow the following suggestions if help is required:

1. OBS is a popular USB capture freeware and has excellent compatibility. Please download it and start with OBS if users are not familiar with USB capture devices.  
<https://obsproject.com/download>
2. Due to the complexities of operating systems and computer hardware, different USB ports on the PC or laptop may have different performance or limitations. Please try all USB ports to see if there are any differences.
3. Please use the USB cable in the box. We do not guarantee the overall performance when the USB capture box works with some other USB cables.
4. HDMI/SDI cable quality may also play an essential role when capturing video. Please be sure that HDMI/SDI cable can do 4K2K@60 HDMI/SDI signal transmission or better. Try different cables when the device is not able to work as expected.
5. If audio has noise when using the PotPlayer software, please adjust the audio renderer to WaveOut on the software. The setting path is:  
PotPlayer → Audio → Audio Output → Audio Renderer → WaveOut
6. If there are problems such as video flipping or wrong direction when using VLC software, please rotate, flip or transpose the video in the VLC software to correct the video. The setting path is:  
Tool → Effects & Filters → Video Effects → Geometry → Transform

## USB Pin Definition



	P1	P2	
VBUS	A4, B4, A9, B9	1	VBUS
Dn1	A7	2	D-
Dp1	A6	3	D+
GND	A1, B1, A12, B12	4	GND
SSTxn1	A3	5	SSRX-
SSTxp1	A2	6	SSRX+
GND	A1, B1, A12, B12	7	GND
SSRxn1	B10	8	SSTX-
SSRxp1	B11	9	SSTX+



## Tech Support

Have technical questions? We may have answered them already!

Please visit BZBGear's support page ([bzbgear.com/support](https://bzbgear.com/support)) for helpful information and tips regarding our products. Here you will find our Knowledge Base ([bzbgear.com/knowledge-base](https://bzbgear.com/knowledge-base)) with detailed tutorials, quick start guides, and step-by-step troubleshooting instructions. Or explore our YouTube channel, BZB TV ([youtube.com/c/BZBTVchannel](https://youtube.com/c/BZBTVchannel)), for help setting up, configuring, and other helpful how-to videos about our gear.

Need more in-depth support? Connect with one of our technical specialists directly:

**Phone**

1.888.499.9906

**Email**

[support@bzbgear.com](mailto:support@bzbgear.com)

**Live Chat**

[bzbgear.com](https://bzbgear.com)



**Direktronik AB** | Box 234, 149 23 Nynäshamn | Besöksadress Konsul Johnsons väg 15 149 45 Nynäshamn  
Telefon 08 52 400 700 | Fax | Epost [info@direktronik.se](mailto:info@direktronik.se) | Org.nr 556281-9663 | Bankgiro 922-0179

## Limited Product Warranty Terms

Pro Line: 5-year warranty from the date of purchase for AV/Broadcasting products bought on or after August 1, 2024.

Essential Line: 3-year warranty from the date of purchase for AV/Broadcasting products bought on or after August 1, 2024.

Cables: Lifetime Limited Product Warranty.

For complete warranty information, please visit [bzbgear.com/warranty](https://bzbgear.com/warranty).

For questions, please call 1.888.499.9906 or email [support@bzbgear.com](mailto:support@bzbgear.com).



## Mission Statement

---

BZBGear is a breakthrough manufacturer of high-quality, innovative audiovisual equipment ranging from AVoIP, professional broadcasting, conferencing, home theater, to live streaming solutions. We pride ourselves on unparalleled customer support and services. Our team offers system design consultation, and highly reviewed technical support for all the products in our catalog. BZBGear delivers quality products designed with users in mind.

## Copyright

---

All the contents in this manual and its copyright are owned by BZBGear. No one is allowed to imitate, copy, or translate this manual without BZBGear's permission. This manual contains no guarantee, standpoint expression or other implies in any form. Product specification and information in this manual is for reference only and subject to change without notice.

**All rights reserved.** No reproducing is allowed without acknowledgement.