

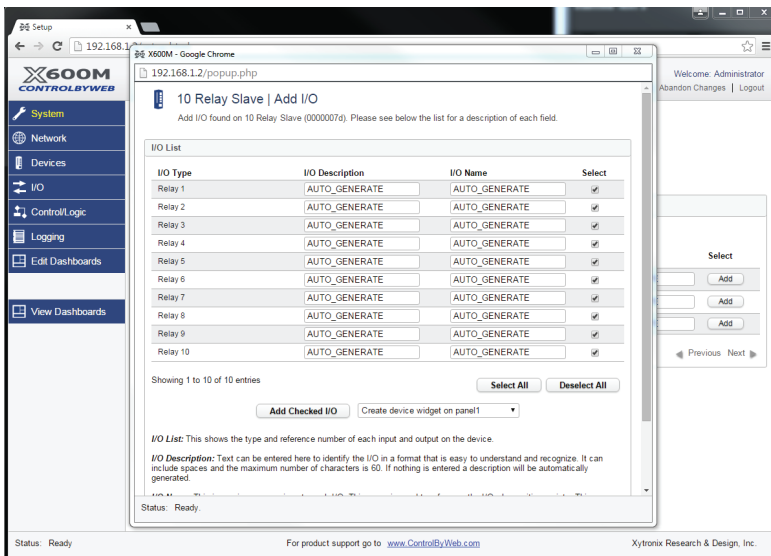


The X-18s™ expansion module is used with the X-600M controller. The X-18s has ten, high-current relays, each with Form-C contacts (SPDT). Wiring connections are made directly to the relays using 1/4" tab terminals located on top of the relays.

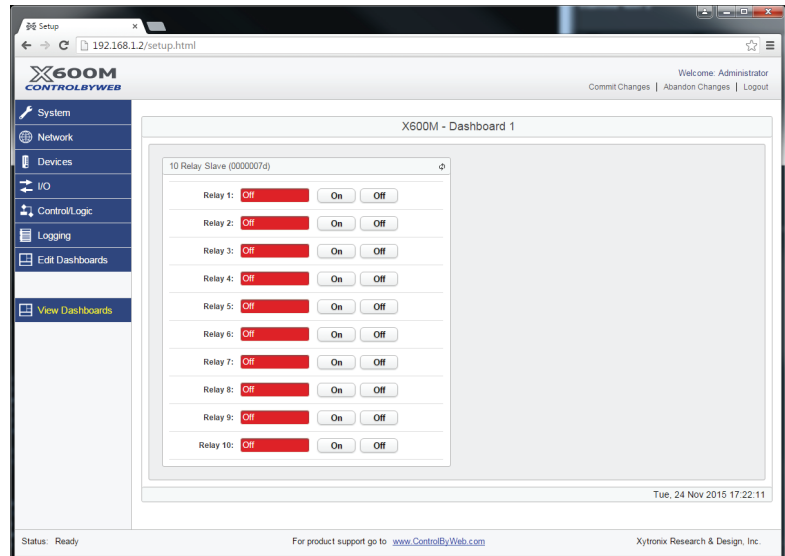
This module is suitable for use with loads which require line voltages and high currents such as pumps, motors, lights and heaters. Attach multiple X-18s modules or a combination of expansion modules to the X-600M for an I/O combination that is tailored to your specific needs.

## Features :

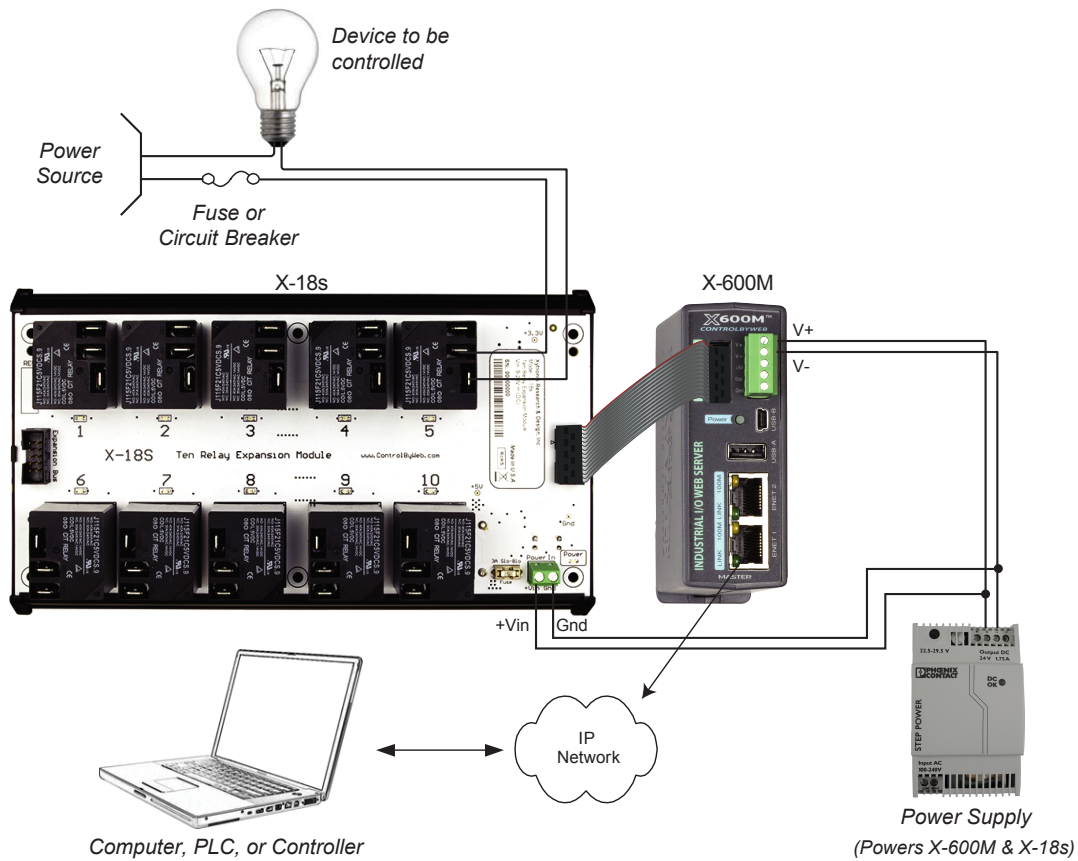
- 10 Isolated relays (SPDT)
- Relay Functions:
  - On
  - Off
  - Pulse
- Relay Connectors: 1/4 inch tab connectors
- Great for heavy-load applications including:
  - Motors
  - Solenoid valves
  - Lights
  - and much more...
- 11 LEDs for relays and power
- Power Supply: 9-28 VDC (24V recommended)



Adding X-18s on the X-600M



View X-18s components on the X-600M Dashboard



## Model: X-18s

### POWER REQUIREMENTS

Input Voltage: 9-28 VDC (24V recommended)

Current: See table below for typical values at 25°C.

Power Supply	Relays OFF	Relays ON
9 VDC	18 mA	1200mA
12 VDC	14 mA	880mA
24 VDC	11 mA	450mA

### RELAY CONTACTS

Number of Relays: 10  
 Max Voltage: 277VAC, 30VDC  
 Max Current: 30A  
 Contact Type: SPDT  
 Load Type: General Purpose  
 Contact Resistance: < 30 milliohms initial  
 Contact Material: AgSnO2  
 Electrical Life: 100K cycles (Typical)  
 Mechanical Life: 10M cycles (Typical)  
 Environmental Rating: Over voltage Category II, Pollution Degree 2  
 Relay Modes: ON/OFF or Pulse  
 Pulse Timer Duration: 0.1 to 86,400 Seconds (1-day)

### CONNECTORS

Expansion Connector: Ribbon cable, 2x5-position, polarized 0.100" pitch  
 Relays: 1/4" tab connectors

### LED INDICATORS

Number of LEDs: 11 (Power on, Relays 1-10)

### PHYSICAL

Size:  
 8.60in (218.44mm) wide  
 4.95in (125.73mm) tall  
 2.46in (62.48mm) deep  
 Weight: 20 oz (566 g)  
 Enclosure Material: PVC  
 Enclosure Flame Rating: UL94 V1

### ENVIRONMENTAL

Operating Temperature: -40°F to 150°F (-40°C to 65.5°C)  
 Storage Temperature: -40°F to 185°F (-40°C to 85°C)  
 Humidity: 5-95%, non-condensing  
 Altitude: Up to 2,000m  
 Indoor use or NEMA-4 protected location

### ELECTROMAGNETIC COMPLIANCE

IEC CISPR 22, CISPR 24  
 FCC 47CFR15 (Class B)  
 EN55024 ITE Immunity (2010)  
 EN55022 Emissions (2010)