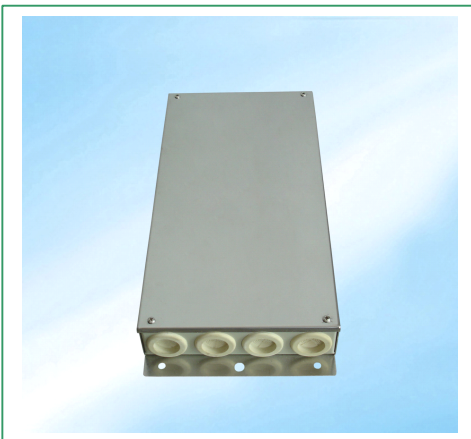


## Fiber Optic Terminal Box

### Model: 04-4320

It is made of stainless steel box, small size, with plastic splice tray inside. It provides an economical way for terminating small optical fiber



### Features:

- Non-sealed type, fixed by bolt.
- Four (24C) cable ports for indoor cable connection
- Easy for operation, has high containing ability for surplus pigtails
- Can connect/reconnect to adapters more than 200 times
- Connector for FC, SC, ST or LC
- Max. Capacity: 24 fibers
- Dimension: 36 \*16.5 \*4.8cm ( L X W X H )
- Weight: 1.5kg

### Applications:

- suitable for Pigtail, ribbon and bunch cable connectors distribution
- Used in wall installation

