

User Manual

21-8050, 21-8052, 21-8054



16-Port Smart USB Multi-Charger w/ LAN

Contents

1. Introduction
2. Safety Information
3. Installation
4. Panel Information
5. Basic Operation
6. Network Control
7. iOS Operation
8. Android Operation
9. Specification
10. Technical Support

1. INTRODUCTION

The Smart USB Multi-Charger w/ LAN, SUMC08L / SUMC16L, is a central unit that can recharge the battery and manage the contents on multiple smart devices (Smart Phones, Tablets, Portable Batteries, Fitness Band...) over a company or corporate network. Previously, each of these smart devices had to be individually connected to the wall socket and manual sync its contents which was tedious and time consuming. With the Smart USB Multi-Charger w/ LAN system, you can easily recharge the battery and manage its content efficiently and cost effectively.

A single Smart USB Multi-Charger SUMC08L / SUMC16L can charge and sync up to 8 or 16 smart devices. Up to 2 additional units can be daisy chained to together so that 24 or 48 smart devices can be manage as a group. Over a single local network, more than 12,000 smart devices can be managed together.

The Smart USB Multi-Charger SUMC08L / SUMC16L offers a space saving and safe method of recharging the batteries of the smart devices and mobile power banks. For a single series of smart devices, uniform syncing of data or application can be done for effective so that managing of smart devices for the enterprise or commercial usage.

As an added convenience, the Smart USB Multi-Charger is design 1U height for easy installation on the server rack cabinet. The costs saving of the Smart USB Multi-Charger are in the space saving, managing of multiple power adapters, and the ease of maintaining its operation. Additional specifically designed cabinet box or cable management accessories options are available.

2. SAFETY INFORMATION

Please read, understand, and follow all the safety information contained in this guide prior to using our product.

2.1 Indoor Use

This product is intended for indoor use plugging into the standard 100~240VAC, 50/60Hz power outlet. Any misuses could damage the product and/or create unsafe operating conditions.

2.2 Location

- Select a location where the airflow is not obstructed.
- Place the product on a flat, level surface at least two feet from any heat source, such as ranges or heater.
- Keep all liquids away from the product.

2.3 Electrical

- Plug the product into a grounded, polarize electrical outlet. Do not alter the ground plug or polarized plug blades.

- Do not overload the AC power. Each socket should not exceed 80% of the power rating.

2.4 Cleaning

- Turn the product off and unplug it before cleaning.
- Use only a dry, soft cloth to wipe the outside of the product.

2.5 Smart Devices

Please properly place your smart devices or power pack on a surface so that it will not fall or drop with proper airflow between each device.

2.6 Rack Mounting

- Make sure the rack is stabilized before working on the rack.
- Load from bottom up with the heaviest items on the bottom.
- Make sure adequate airflow is provided.
- Do not step or stand on any device while servicing other devices.

3. INSTALLATION

Please read, understand, and follow all the safety information contained in this guide prior to using our product.

3.1 Package Content

Please check package content before starting the installation. If any component is missing or defective, please contact your local distributor.

1 x 8/16 Port Smart USB MultiCharger

1 x Rackmount Bracket Kit

1 x Power Cord

1 x User Guide



3.2 Brackets

Please screw on the Rackmount Bracket on both sides of the unit.

3.3 Cabinet

Please screw the unit onto the cabinet.

3.4 Power

Plug the power cord onto the unit then plug it to a power outlet.

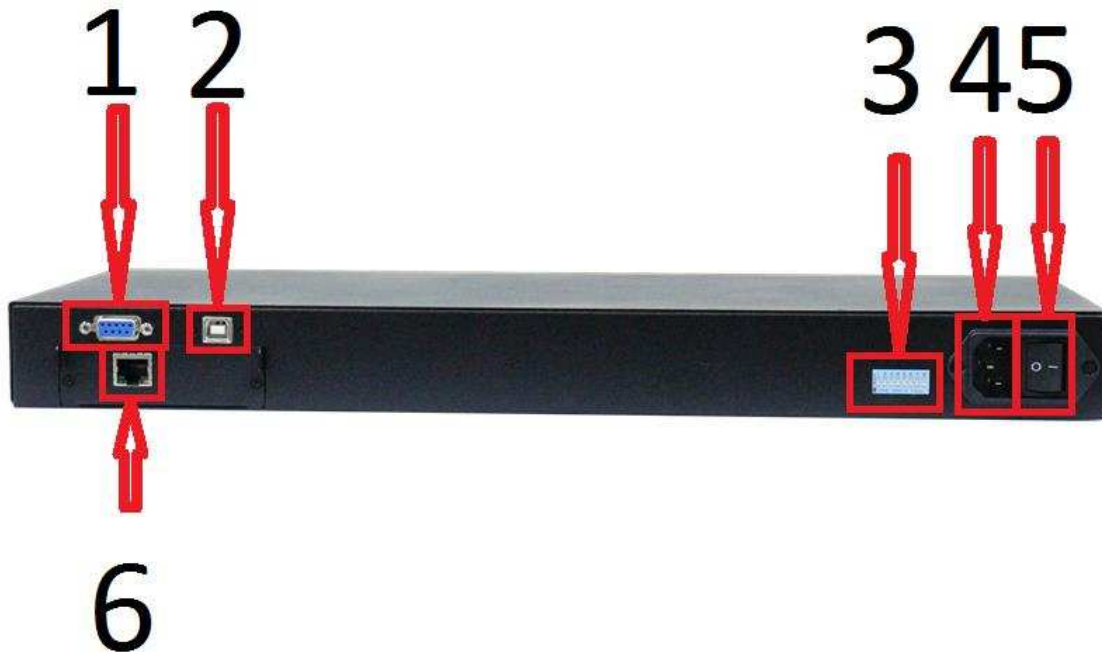
4. PANEL INFORMATION

The front and back panel to the Smart USB MultiCharger provides basic understanding of the indications and function of the unit. Please refer to below content when operating or greater clarification on its usage. The charging of the smart device will go from Quick Charging to Slow Charging to Finish Charging Mode depending on your battery status. This charging cycle is set to efficiently charge your device while maintaining the number of charging cycle of the battery.



4.1 Front View

- A. Charging & Data Sync USB Port
- B. LED Status Display –
 - a. Off: Not Connected
 - b. Fast Green Flashing: Quick Charging Mode
 - c. Slow Green Flashing: Slow Charging Mode
 - d. Green On: Finish Charging
 - e. Color Red On: Selected
 - f. Fast Orange Flashing
 - g. Slow Orange Flashing
 - h. Orange On
- C. Autoscan Mode LED
- D. CH: Channel Display
- E. A: 3 digits current display (ampere)
- F. Buttons
 - a. +: Cyclic Increase Port/Channel or Setting
 - b. -: Cyclic Decrease Port/Channel or Setting
 - c. Both (1 sec): Start Autoscan
Any button to stop Autoscan



4.2 Back View

1. RS485 Port
2. Computer Data Sync Port
3. Slide Switch Settings
 1. Autoscans Mode
 - Off: All
 - On: Active Only
 2. Standby Mode
 - Off: Maintain low current charging
 - On: Turn off power to port
 3. Authorize Use Only
 - Requires special tools
 4. Autoscans Time Setting Enable:
 - Off: Default
 - On: To set Autoscans time interval with front panel buttons
3/5/10/15/20/25/30 seconds
 5. Fast Charge Setting Enable
 - Off: Default
 - On: To set Fast Charge Threshold with the front panel buttons
800mA~1.2A
 6. Slow Charge Setting Enable
 - Off: Default
 - On: To set Slow Charge Threshold with the front panel buttons
100mA~480mA
 7. Standby Threshold Enable
 - Off: Default
 - On: To set Standby Threshold with the front panel buttons

20mA~90mA

8. Station ID
Off: Default
4. Power Socket
5. Power On/Off
6. LAN Plug – SUML series

5. BASIC OPERATION

The section explains the Basic Daily Operation of using the Smart USB MultiCharger for the electrical power charging. It does not contain information on syncing or backup which is specific the operating system of the smart devices.

5.1 Typical Pre-Conditions

- a. Proper power cord connecting from an active wall plug to Power Socket (4.2.4) at the back panel.
- b. Make sure the Power is switch on (4.2.4)
- c. Have the USB Connection Cable for your smart devices.

5.2 Connecting Sequence

- a. Connect USB Connection Cable to the smart device.
- b. Plug the USB end of the cable to any of the Charging and Data Sync port (4.1.A)
- c. The LED will show its charging mode for that port (4.1.B).
- d. The display will automatically switch the latest plugin port and display the port number (4.1.D)
- e. The current port's current is display in Amps (4.1.E).
- f. When the LED for the port stay lit on the specific port, then the charging is completed and the smart device can be remove (4.1.B)

6. NETWORK CONTROL

The Network Control comprises of proprietary network protocol and application software to help you easily manage the charging devices either in the local network or through an international base organization. Currently the application only supports Microsoft Window's platform. Plugin a LAN Cat. cabling to 4.2.6 to start.

6.1 Software Installation



Take the file provided that came with the Smart MultiCharger w/ LAN software and extract it if necessary so that it is in the executable exe form. Double click on the icon to start the installation and allow for it in the User Account Control if applicable. Click next to step through the language selection, licensing, and the file location for the program.



Once finish, you should see an icon at the desktop and your installation is complete.

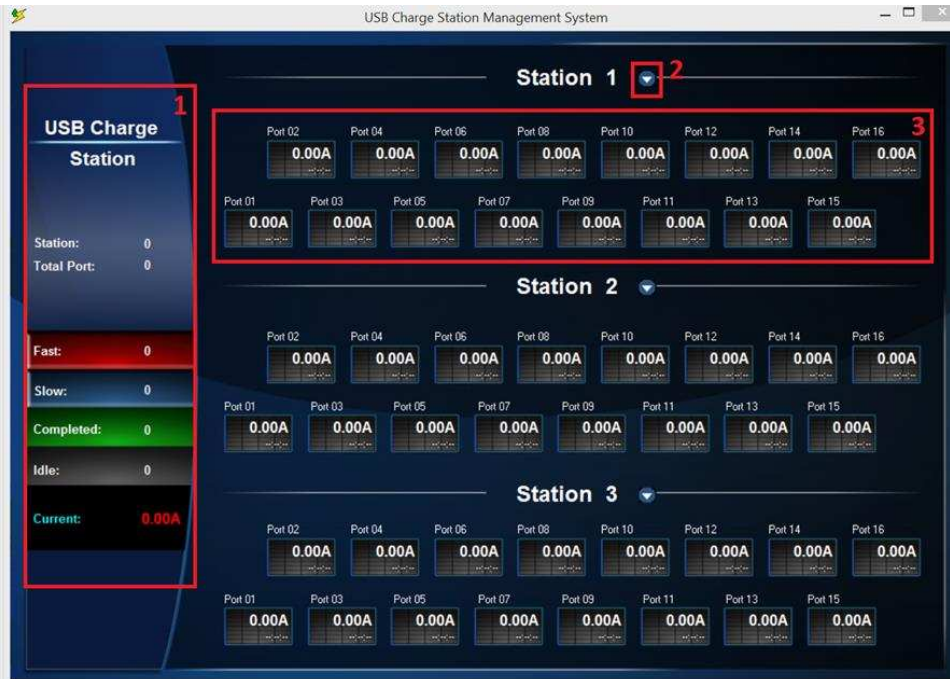


The network configuration uses DHCP and the application automatically search for Smart USB MultiCharger w/ LAN on the local network. To access specific unit once the program is running, go to the system tray and right click and select the System Setting, then it would show the selected IP address unit being manage.



6.2 Basic Operation of SML Network Application

Double click on the desktop icon to start the operation of the SML software. The Main Screen consists of 1.Selected Station Quick Information Panel, 2.Station Setting Submenu, and 3.Selected Station Port Information of the unit that is currently connected on the network.



6.3 Station Setting Submenu

Clicking the Station Setting Submenu will display detail information on the select Smart USB MultiCharger w/ LAN. Any change made need to be saved on the connected unit. For reference on setting, please see 4.2.3 Slide Switch Settings





6.4 Accessing the Data Log

To access the data log on the port, double click on the Station's port and it will present the log setting for the port.



The log file can be display in List format or Diagram format.

Station 1 - Port 13

Type: Auto Refresh Diagram Period Second: 01

List Diagram

Start: 2015/1/14 00:00

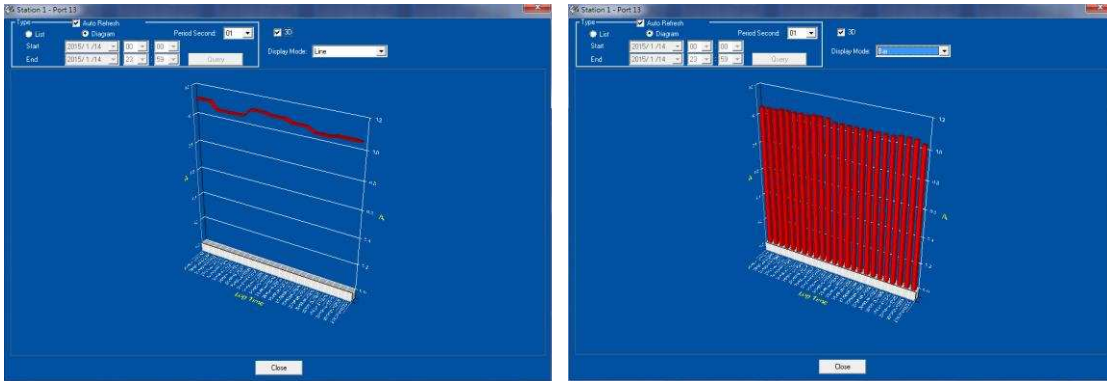
End: 2015/1/14 23:59

Query

No	Year	Month	Day	Hour	Min	Sec	A	Plug in
000	2015	1	14	14	53	52	2.01	8
001	2015	1	14	14	53	53	2.01	8
002	2015	1	14	14	53	54	2.01	8
003	2015	1	14	14	53	55	2.02	8
004	2015	1	14	14	53	56	2.02	8
005	2015	1	14	14	53	58	2.02	8
006	2015	1	14	14	53	59	2.02	8
007	2015	1	14	14	54	0	2.02	8
008	2015	1	14	14	54	1	2.02	8
009	2015	1	14	14	54	2	2.02	8
010	2015	1	14	14	54	3	2.02	8
011	2015	1	14	14	54	4	2.02	8
012	2015	1	14	14	54	5	2.02	8
013	2015	1	14	14	54	7	2.02	8
014	2015	1	14	14	54	8	2.02	8
015	2015	1	14	14	54	9	2.02	8
016	2015	1	14	14	54	10	2.02	8
017	2015	1	14	14	54	11	2.02	8
018	2015	1	14	14	54	12	2.02	8
019	2015	1	14	14	54	13	2.03	8
020	2015	1	14	14	54	14	2.03	8
021	2015	1	14	14	54	15	2.03	8
022	2015	1	14	14	54	16	2.02	8
023	2015	1	14	14	54	18	2.02	8

Close

Only the Diagram format has the option for 3D viewing. You have a choice of viewing 3D in Line or Bar format.



To save the log data for future reference, go the location of the store program is stored and copy the log folder's files to another destination.



7. iOS OPERATION

The iOS operation is based on Apple’s Configurator for syncing of data and application. For specific detail operation of Apple’s Configurator, it is recommended that you consult their user guide. If you have not already download it, please go to the Mac’s App Store to search for “configurator” and download then install the free Apple Configurator. iDevice usage in the document refer to iPhone, iPad, iPod, and/or any smart devices developed by Apple.

7.1 System requirements

MAC Computer with OS X Lion v10.72 or newer

Access to iTunes 10.6 or newer

Smart devices running iOS 4.3 or newer for syncing or 5.0 or newer for supervise functions

7.2 Mode options

There are three basic Configurator Mode of operation depending on the type of situation fitting to the deployment need. Please decide on the mode needed and follow the below instruction for further detail. Each mode has two parts: the MAC Computer and iDevice portion.

Prepare devices – duplicate the setting to all the same iDevices to the same one time initial settings.

Supervise devices – setting all the same iDevices to the same setting whenever it is connected. Continual refresh to the same configuration.

Assign devices – backup and collaboration mode in which iDevices data is uploaded onto the server/Mac.

For additional detail on the specific operation of the Apple Configurator, please check the user guide or Help file.



a. Prepare devices

In using the Prepare mode for replicating the iDevices, one thing to consider is if it is just a fresh updated state without data or with data. Without data, you can create a profile which will get the latest system update along with the types of apps and setting that is needed. For creating a profile with the specific data required, it is necessary to first create a iDevice with the wanted contents, save that into a profile with “Create Backup” in the Restore selection. Then when preparing other iDevices, select the profile with the backup and select the backup name in the Restore selection.

Press the Prepare icon on the Apple’s Configurator

Create a device name and enter the Name.

Select the setting need in all three tab sections: Settings, Aps, and Setup

Click the Install Profiles and connect the iDevices to be configured.

Click Next then select previous profile name or add a New profile or Import one with the restriction/ payload requirement; then press Next

On the connected iDevice, press Install. Make sure you have the authorization code to the iDevice and key it when requested. After display of consent message, press Next on the iDevice. Finally, press Install and the iDevice will display its completion.

Close the Apple Configurator on the MAC and you have finish syncing the setting for all the connected similar iDevices.

b. Supervise devices

Press the Supervise icon on the Apple's Configurator.

Select or add the Supervised Devices Group.

After verifying the Setting and Aps tab content as desired, select the Profiles to use on the iDevices. The lower icon will change from Refresh to Apply. Press the Apply icon and follow its instruction for completion.

c. Assign devices

Assign device associate a user group to the Supervise devices. It can be used to manage specific data to be share with the specific user as he uses different iDevices. To access the Assign group, press the Assign icon. Can Add or select the user group. For each user group, you can assign or add different user in the next pane.

8. Android OPERATION

There is no specific company dominating on Android system. Below is a list of company that offer apps that provide syncing and managing of smart devices. Please check to see which of the third party product matches your requirement and download their user manual for further instruction. Most of the listed companies have trail version for you to try out.

<http://www.air-watch.com/>

<https://www.amtelnet.com/>

<http://www.citrix.com/products/xenmobile/overview.html>

<http://www.excitor.com/>

<http://www.fancyfon.com/>

<http://www.maas360.com/>

<https://www.mobileiron.com/en>

<http://www.sophos.com/en-us/products/mobile-control.aspx>

<http://www.symantec.com/mobility/implement.jsp>

9. SPECIFICATION

Model No.	SUMC08L	SUMC16L
Connectors	8 x USB Type A Female	16 x USB Type A Female
	1 x USB Type B Female	
	1 x DB9 Female	
	1 x RJ45 Female	
	1 x IEC C14 Male	
Displays	1 x 2 digits 7 segment LEDs (Channel)	
	1 x 3 digits 7 segment LEDs (Current)	
	8 x Red/Green LEDs (Port)	16 x Red/Green LEDs (Ports)
	1 x Green LED (Green)	
Switches or Buttons	2 x Momentary Switch	
	1 x Toggle Switch	
	1 x 8 Position Slide Switch	
Autoscan Time	3/5/10/15/20/25/30 Seconds	
Operating Temperature	0 ~ 50°C	
Storage Temperature	-20 ~ 60°C	
Power	100~240VAC, 50/60Hz	
Weight	3Kg	3.3Kg
Dimension (W x D x H)	44 x 19 x 4.4cm	
Emission / Safety	FCC, CE	

9. TECHNICAL SUPPORT

Please contact your local dealer for technical support issue.

DISCLAIMER

Information in this document is subject to change without notice. The manufacturer does not make any representations or warranties (implied or otherwise) regarding the accuracy and completeness of this document and shall in no event be liable for any loss of profit or any other commercial damage, including but not limited to special, incidental, consequential, or other damages.

No part of this document may be reproduced or transmitted in any form by any means, electronic or mechanical, including photocopying, recording or information recording and retrieval systems without the express written permission of the manufacturer.

All brand names and product names used in this document are trademarks, or registered trademarks of their respective holders.

FCC/CE STATEMENTS

FCC Statement: This equipment has been tested and found to comply with the regulations for a Class B digital device, pursuant to Part 15 of FCC Rules. These limits are designed to provide reasonable protection against harmful interference when the equipment is operated in a commercial environment. This equipment generates, uses, and can radiate radio frequency energy and; if not installed and used in accordance with User Guide, may cause harmful interference to radio communications. Operation of this equipment in a residential area is likely to cause harmful interference in which case, the user will be require to correct the interference at his/her expense.

CE Statement: This is a Class B product in the domestic environment, this product may cause radio interference, in which case the user may be required to take adequate measures.

