



Cable ID: 20111818-11

Test Limit: ISO11801 Channel Class Ea

Limits Version: V7.6

Date / Time: 07/10/2023 02:05:39 PM

Headroom 16.8 dB (NEXT 3,6-4,5)

Cable Type: Cat 6A S/FTP

NVP: 77.0%

Main: Versiv

S/N: 1847197

Software Version: V6.7 Build 1

Calibration Date: 10/25/2021

Adapter: DSX-8000 (DSX-CHA004)

S/N: 3688043

Test Summary: PASS

Remote: Versiv

S/N: 1838151

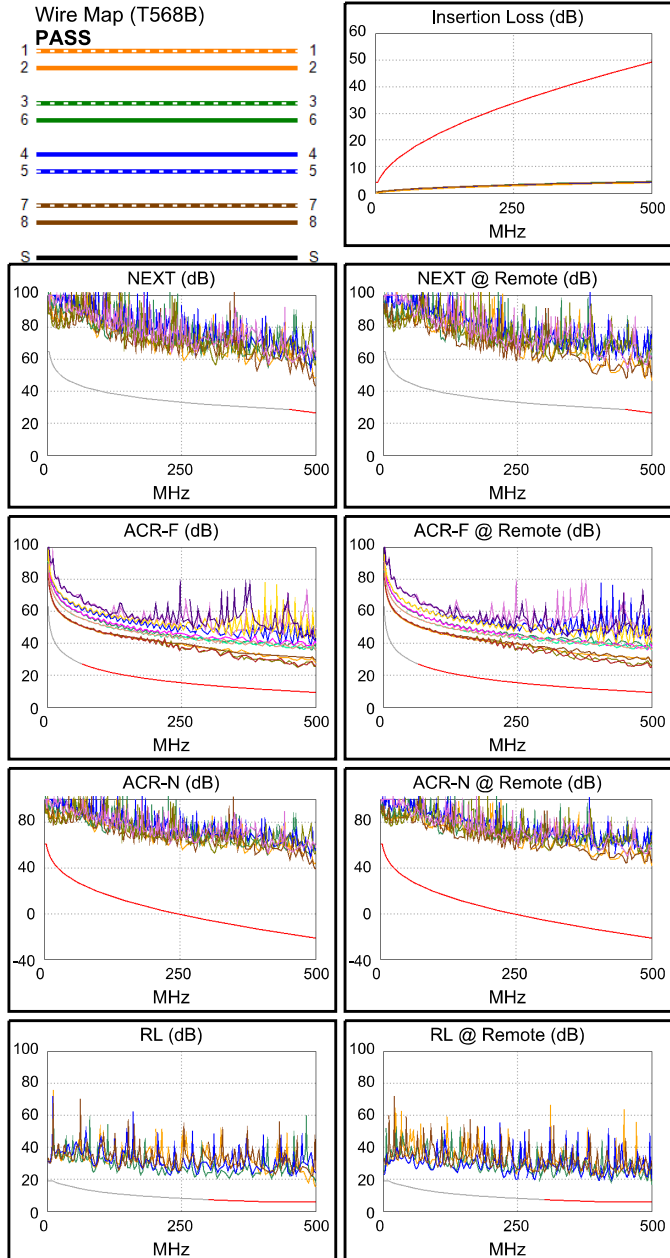
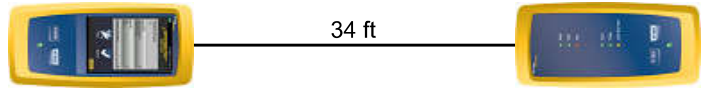
Software Version: V6.7 Build 1

Calibration Date: 10/29/2018

Adapter: DSX-8000R (DSX-CHA004)

S/N: 4083344

Length (ft), Limit 328	[Pair 4,5]	34
Prop. Delay (ns), Limit 555	[Pair 1,2]	46
Delay Skew (ns), Limit 50	[Pair 1,2]	1
Resistance (ohms), Limit 25.00	[Pair 4,5]	1.98
Insertion Loss Margin (dB)	[Pair 3,6]	44.7
Frequency (MHz)	[Pair 3,6]	500.0
Limit (dB)	[Pair 3,6]	49.3



Worst Case Margin Worst Case Value

PASS	MAIN	SR	MAIN	SR
Worst Pair	3,6-4,5	3,6-4,5	3,6-4,5	1,2-3,6
NEXT (dB)	16.8	19.4	16.8	20.2
Freq. (MHz)	500.0	453.0	500.0	500.0
Limit (dB)	26.5	28.6	26.5	26.5
Worst Pair	3,6	3,6	3,6	3,6
PS NEXT (dB)	18.7	20.7	18.7	21.2
Freq. (MHz)	500.0	488.0	500.0	500.0
Limit (dB)	23.4	24.0	23.4	23.4

PASS	MAIN	SR	MAIN	SR
Worst Pair	3,6-4,5	4,5-3,6	3,6-4,5	4,5-3,6
ACR-F (dB)	15.0	14.8	15.0	14.8
Freq. (MHz)	466.0	466.0	466.0	466.0
Limit (dB)	9.9	9.9	9.9	9.9
Worst Pair	3,6	3,6	3,6	3,6
PS ACR-F (dB)	16.9	16.7	17.4	17.3
Freq. (MHz)	466.0	466.0	500.0	498.0
Limit (dB)	6.9	6.9	6.3	6.3

PASS	MAIN	SR	MAIN	SR
Worst Pair	3,6-7,8	3,6-7,8	3,6-4,5	1,2-3,6
ACR-N (dB)	25.5	26.1	60.6	63.5
Freq. (MHz)	2.4	2.4	500.0	500.0
Limit (dB)	61.0	61.0	-21.4	-21.4
Worst Pair	3,6	3,6	3,6	3,6
PS ACR-N (dB)	25.9	25.4	62.0	64.5
Freq. (MHz)	2.4	2.6	500.0	500.0
Limit (dB)	58.0	58.0	-24.5	-24.5

PASS	MAIN	SR	MAIN	SR
Worst Pair	1,2	3,6	1,2	3,6
RL (dB)	9.3	10.5	9.3	10.5
Freq. (MHz)	500.0	500.0	500.0	500.0
Limit (dB)	6.0	6.0	6.0	6.0

Compliant Network Standards:

10BASE-T	100BASE-TX	100BASE-T4
1000BASE-T	2.5GBASE-T	5GBASE-T
10GBASE-T	ATM-25	ATM-51
ATM-155	100VG-AnyLan	TR-4
TR-16 Active	TR-16 Passive	