

USB Powered 10/100Base-T Network Tap



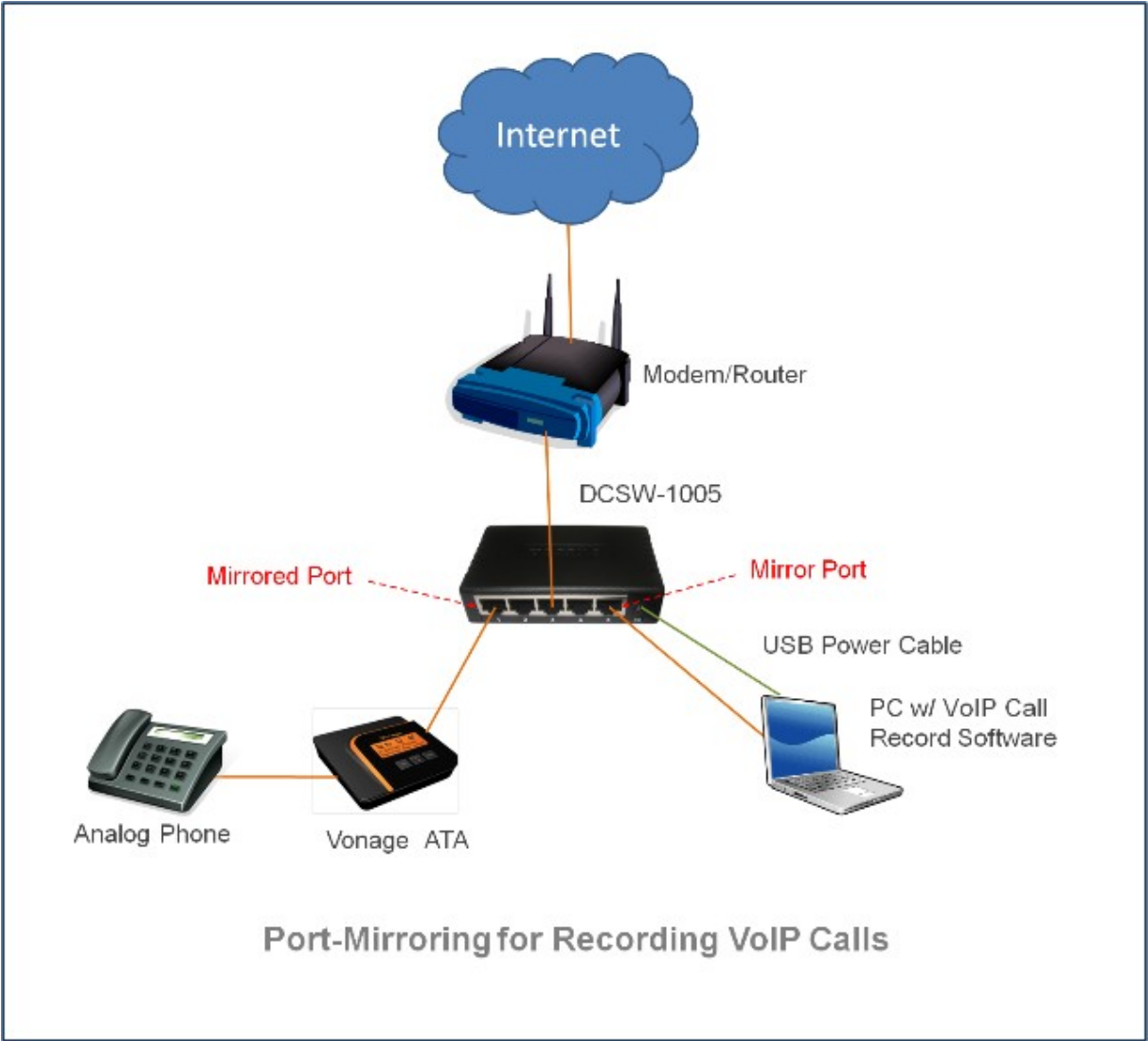
- Network Tap for 10/100Base-T Fast Ethernet
- PoE Pass-Through*
- USB Powered
- Mini Enclosure and Easy to carry

[Description]

Dualcomm's patent pending 10/100Base-T Network Tap (DCSW-1005) is a portable hardware device for capturing bi-directional inline traffic of an Ethernet link segment. It is usually used for network intrusion detection systems, VoIP recording, network probes for monitoring and trouble-shooting, and etc. The DCSW-1005 network tap is designed to be conveniently powered by a USB port so that an otherwise heavy and bulky AC/DC power adapter becomes not necessary!

Similar to DCSW-1005, DCSW-1005PT further implements PoE inline power pass-through between two inline ports, which allows it to be placed inline between a PSE such as an PoE Ethernet switch and PoE powered device such as an IP phone or access point without blocking the POE inline power from the PSE to reach the PoE powered device.

DCSW-1005 and DCSW-1005PT can also function as a 5-port 10/100Base-T fast Ethernet Switch.



[Specifications]

Power Input	5VDC or power from a host USB port
Network Ports	Inline Ports: Port 1 & 2; Monitor Port: Port 5
PoE Inline Power Pass-Through (DCSW-1005PT)	Between Port #1 and Port #2. Support both standard PoE 802.3af and PoE+ 802.3at
Standards	IEEE 802.3 10Base-T and 100Base-TX
Network Interface	5 auto-negotiation 10/100Mbps RJ-45 switching ports with Auto-MDI/MDIX
Cable Requirements	UTP CAT5e up to 328ft/100m
Forwarding Method	Store and forward
MAC Address	2K
Buffer Memory	256 KB RAM
LED Indicators	one LED for power indication and 5 LEDs, each for link/activity per port
Flow Control	Standard back pressure on half-duplex mode, and standard IEEE 802.3x on full-duplex
EMC Compliances	FCC Part 15 and CE
Dimensions	100 x 64 x 23 mm (L x W x H)
Warranty	One year manufacturer warranty