

# IXIA FLEX TAP™

**ixia**  
DATA SHEET

**DIREKTRONIK**

## PASSIVE NETWORK MONITORING

The Ixia Flex Tap™ provide reliable continuous visibility of 100% of network traffic to support performance and security with no network performance degradation or disruption.

Flex Taps are flexible and scalable, each Tap in the family is modular, can supports speeds up to 100G, and is 100 percent passive. Flex Taps are available in multimode and single mode fiber varieties with split ratios ranging from 50/50 up to 90/10. Depending on the model, the Flex Tap is available with either LC or MTP (MPO) connectors. Up to 36 taps can be deployed in a single 1U 19inch rack space.

The design of the Flex Tap is optimized and tested for high-performance fiber networks ranging from 1G to 100G. Flex Taps are deployed at any inline connection on the network, therefore no additional overhead or management burden is added to the network devices to copy traffic for the monitoring/security infrastructure. The Flex Tap is compatible with all major manufacturers' monitoring devices, including protocol analyzers, probes, and intrusion detection systems, and is protocol agnostic.

## KEY FEATURES

- Low insertion loss – minimize impact on data flows
- Flex Tap is fully passive – monitoring infrastructure does not impact network availability
- Does not modify traffic – tools see real copies of the packets from the network
- High density – Save valuable rack real estate
- Cost effective – avoid costly expenses managing SPAN ports



## HIGHLIGHTS

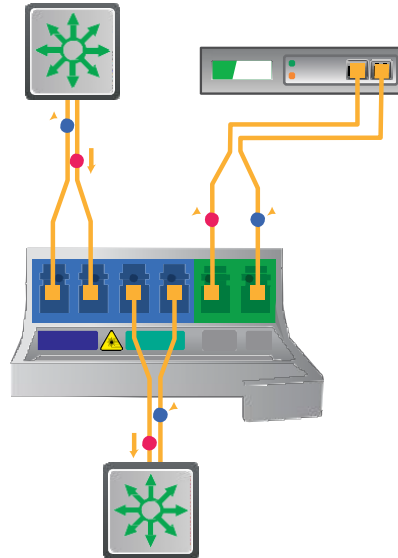
- Highly reliable fiber optic Tap technology
- Deploy up to 36 Taps in 1U
- Supports network speeds from 1G to 100G
- Available in multimode and single mode fiber models
- Cisco 40G BiDi Tap model available
- Choice of standard size rack mount (up to 36 taps) or mini-chassis which is one third width – ideal for desk top or space constrained deployments
- Passes all full-duplex traffic (including errors) from all layers
- Non-disruptive and transparent
- 40G MTP model can be used as one 40G tap or 4 x 10G taps
- 100G MTP model can be used as one 100G tap or 12 x 10G taps
- Requires no power and does not have an IP address, providing safety from remote attacks
- Black and tan LC connectors denote multimode fiber for network monitoring
- Color coded in blue and green for easy port monitoring on LC connectors in single mode fiber
- 40G and 100G Multimode MTP models include monitor port Y-Cable

**STANDARD FLEX TAPS – UP TO 24 MODULES IN ONE STANDARD RACK MOUNT – MAX 24 TAPS**

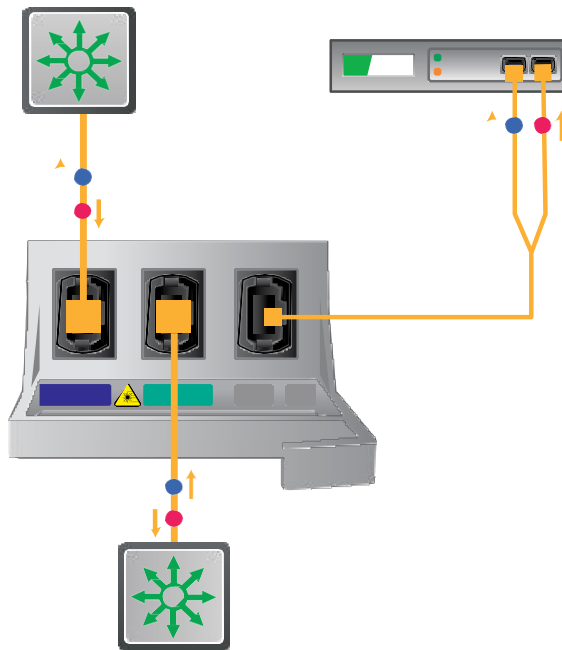


**FLEX TAP VHD – UP TO 12 MODULES IN ONE STANDARD RACK MOUNT – MAX 36 TAPS**





## LC TAP DEPLOYMENT



## MTP TAP DEPLOYMENT

## SPECIFICATIONS

SPECIFICATIONS		
<b>Operating</b>	<ul style="list-style-type: none"> <li>Operating Temperature: 0° to 40°C</li> <li>Storage Temperature: -10° to 70°C</li> <li>Relative Humidity: 10% min, 95% max, non-condensing</li> </ul>	
<b>Mechanical</b>	Standard Rack Dimensions: 1.7" High x 8.4" Deep x 19" Wide Mini Rack Dimensions: 1.7" High x 8.4" Deep x 5.7" Wide	
<b>Certifications</b>	<ul style="list-style-type: none"> <li>Fully RoHS-compliant</li> <li>Safety Certifications: UL, CSA, CB</li> </ul>	
STANDARD MODELS - LC		
	LC Models	Cisco BiDi Model
<b>Mechanical</b>	1.6" High x 7.8" Deep x 0.7" Wide	1.6" High x 10.1" Deep x 1.3" Wide
<b>Fiber Specs</b>	Multimode: 62.5/125µm; 850nm 50/125µm; 850nm Supports speeds of 1G and 10G	Single Mode: 8.5/125µm; 1310nm/1550nm Supports speeds of 1G, 10G, 40G, and 100G
<b>Connectors</b>	<ul style="list-style-type: none"> <li>Network Ports: 2 x Duplex LC</li> <li>Monitoring Ports: 1 x Duplex LC</li> </ul>	<ul style="list-style-type: none"> <li>Network Ports: 2 x Duplex LC per tap</li> <li>Monitoring Ports: 2 x Duplex LC per tap</li> </ul>
MTP MODELS		
<b>Mechanical</b>	1.6" High x 10.1" Deep x 1.3" Wide	
<b>Fiber Specs</b>	50/125µm OM4; 850nm Supports speeds of 10G, 40G*, and 100G* *40G & 100G are supported for SR4 and SR10 multimode optics	
<b>Connectors</b>	<ul style="list-style-type: none"> <li>Network Ports: 2 x MTP (MPO); 12 Fiber or 24 Fiber</li> <li>Monitoring Ports: 1 x MTP (MPO); 12 Fiber or 24 Fiber</li> </ul>	

VHD MODELS - LC			
<b>Mechanical</b>	1.6" High x 10.1" Deep x 1.3" Wide		
<b>Fiber Specs</b>	<table border="0"> <tr> <td>Multimode: 62.5/125µm; 850nm 50/125µm; 850nm Supports speeds of 1G and 10G</td> <td>Single Mode: 8.5/125µm; 1310nm/1550nm Supports speeds of 1G, 10G, 40G, and 100G</td> </tr> </table>	Multimode: 62.5/125µm; 850nm 50/125µm; 850nm Supports speeds of 1G and 10G	Single Mode: 8.5/125µm; 1310nm/1550nm Supports speeds of 1G, 10G, 40G, and 100G
Multimode: 62.5/125µm; 850nm 50/125µm; 850nm Supports speeds of 1G and 10G	Single Mode: 8.5/125µm; 1310nm/1550nm Supports speeds of 1G, 10G, 40G, and 100G		
<b>Connectors</b>	<ul style="list-style-type: none"> <li>• Network Ports: 6 x Duplex LC</li> <li>• Monitoring Ports: 3 x Duplex LC</li> </ul>		

INSERTION LOSS (NETWORK / MONITOR)					
	50/50	60/40	70/30	80/20	90/10
<b>1/10/40/100G SM (LC &amp; VHD)</b>	3.7db /3.7db	2.8 dB/ 4.8 dB	2.0 dB/ 6.1 dB	1.3 dB/ 8.0 dB	0.8 dB/ 12.0 dB
<b>1G MM (LC)</b>	4.5 dB/ 4.5 dB	3.1 dB / 5.1 dB	2.4 dB / 6.3 dB	1.8 dB/ 8.1 dB	1.3 dB / 11.5 dB
<b>10G MM (LC &amp; VHD)</b>	3.9 dB / 3.9 dB	2.9 DB / 4.9 DB	2.2 dB / 6.1 dB	1.6 DB / 7.9 dB	-
<b>40G MM (BiDi)</b>	4.1 dB / 4.1 dB	-	-	-	-
<b>4x10/40/100G MM (MTP SR4)</b>	4.4 dB / 4.4 dB	-	2.6 dB / 6.6 dB	-	-
<b>12x10/40/100G MM (MTP SR10)</b>	4.4 dB / 4.4 dB	-	2.6 dB / 6.6 dB	-	-

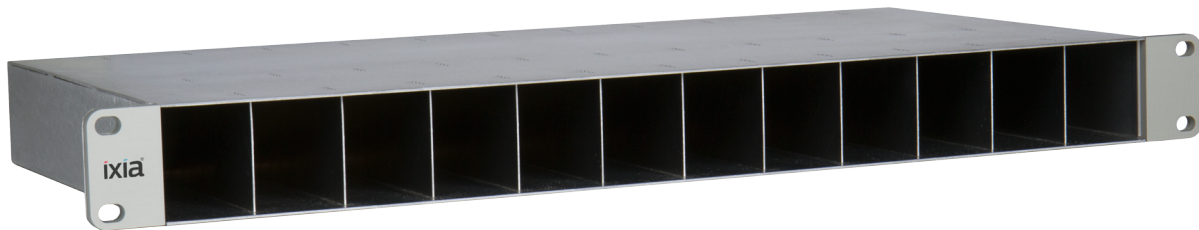
## ORDERING INFORMATION

PART NUMBERS					
	50/50	60/40	70/30	80/20	90/10
<b>LC 1/10/40/100G SM – 8.5µm</b>	TP-100-LR-85-50 - 80-0644	TP-100-LR-85-60 - TBD	TP-100-LR-85-70 - 80-0649	TP-100-LR-85-80 - TBD	TP-100-LR-85-90 - TBD

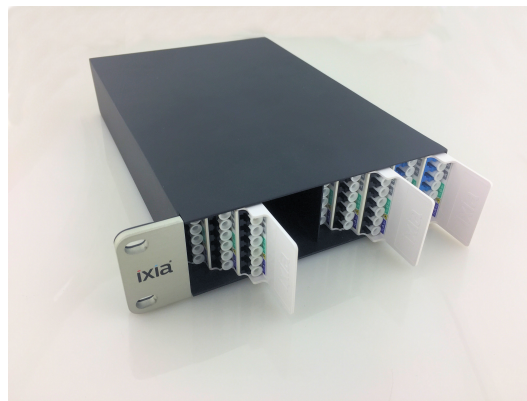
PART NUMBERS					
	50/50	60/40	70/30	80/20	90/10
<b>VHD 1/10/40/100G SM – 8.5um</b>	TPVHD-100- LR-85-50	TPVHD-100- LR-85-60	TPVHD-100- LR-85-70	-	-
<b>LC 1G MM – 62.5um</b>	TP-1-SX-62-50	TP-1-SX-62-60	TP-1-SX-62-70	TP-1-SX- 62-80	TP-1-SX-62- 90
<b>LC 1G MM – 50um</b>	TP-1-SX-50-50	TP-1-SX-50-60	TP-1-SX-50-70	TP-1-SX- 50-80	TP-1-SX-50- 90
<b>LC 1/10G MM – 50um</b>	TPX-10- SR-50-50 - 80-0643	TPX-10- SR-50-60 - TBD	TPX-10- SR-50-70 - 80-0648	TPX-10-SR- 50-80 - TBD	-
<b>VHD 1/10G MM – 50um</b>	TPVHD-10-SR- 50-50	TPVHD-10-SR- 50-60	TPVHD-10-SR- 50-70	-	-
<b>40G BiDi</b>	TPX-40-SR-50- 50-BD - 80-0651	-	-	-	-
<b>MTP SR4 (10/40/100G) MM</b>	TPX-40-SR-50- 50-MTP - 80-0653	-	TPX-40-SR-50- 70-MTP - 80-0654	-	-
<b>MTP SR10 (10/40/100G) MM</b>	TPX-100-SR- 50-50-MTP TBD	-	TPX-100-SR- 50-70-MTP TBD	-	-
<b>16 SM Tap Bundle</b>	TP-PACK-16- SM50	-	TP-PACK-16- SM70	-	-
<b>16 MM Tap Bundle</b>	TP-PACK-16- MM50	-	TP-PACK-16- MM70	-	-
<b>24 SM Tap Bundle</b>	TP-PACK-24- SM50	-	TP-PACK-24- SM70	-	-
<b>24 MM Tap Bundle</b>	TP-PACK-24- MM50	-	TP-PACK-24- MM70	-	-
RACK MOUNT					
<b>Rack Mount</b>	RK-FLEX-24 - 80-0632		<b>Spacer Unit</b>	RK-FLEX-SPACER - 80-0633	
<b>Mini Rack Mount</b>	RK-FLEX-8 (CONTAINS ONE SPACER) - 80-0631				

### RACK OPTIONS

#### STANDARD RACK CHASSIS – RK-FLEX-24



#### MINI RACK CHASSIS – RK-FLEX-8



### CABLE ACCESSORIES

#### 705-0012-001

Cable Assembly Kit, LC/LC, 1G/10G, MM, 50um (955-8100)

#### 705-0013-001

Cable Assembly Kit, LC/LC 1G/10G, MM, 62.5um (955-8101)

#### 705-0014-001

Cable Assembly Kit, LC/LC 1G/10G, SM, 8.5um (955-8102)

#### 705-0015-001

Cable Assembly Kit, LC/SC 1G/10G, MM, 50um (955-8103)

#### 705-0016-001

Cable Assembly Kit, LC/SC 1G/10G, MM, 62.5um (955-8104)

### **705-0017-001**

Cable Assembly Kit, LC/SC 1G/10G, SM, 8.5um (955-8105)

### **705-0027-001**

Cable Assembly Kit, MTP/MTP, MM, OM4, 50um (955-8106)

### **CKT-LC-LC-50-OM4**

Cable Assembly Kit, LC/LC, 1G/10G, MM, OM4, 50um (955-8117)

### **CKT-MTP-4LC-50-OM4**

Cable Breakout Kit, MTP to 4 LCs, MM, 50um, OM4 (955-8115)

### **CKT-MTP-12LC-50-OM4**

Cable Breakout Kit, MTP to 12 LCs, MM, 50um, OM4 (955-8117)

### **CKT-MTP-4LC-85-LR**

Cable Breakout Kit, MTP to 4 LCs, SM, 8.5um, (955-8162)

#### **IXIA WORLDWIDE HEADQUARTERS**

26601 AGOURA RD.  
CALABASAS, CA 91302

#### **(TOLL FREE NORTH AMERICA)**

1.877.367.4942

#### **(OUTSIDE NORTH AMERICA)**

+1.818.871.1800  
(FAX) 818.871.1805

[www.ixiacom.com](http://www.ixiacom.com)

#### **IXIA ASIA PACIFIC HEADQUARTERS**

101 THOMSON ROAD,  
#29-04/05 UNITED SQUARE,  
SINGAPORE 307591

**SALES +65.6332.0125**

(FAX) +65.6332.0127

#### **Direktronik AB**

Konsul Johnsons väg 15  
SE-149 45 Nynäshamn  
Sweden

+46 8 524 00 700  
[info@direktronik.se](mailto:info@direktronik.se)  
[www.direktronik.se](http://www.direktronik.se)