

# DIREKTRONIK

## 4 Ports MPPT Solar PoE Switch for Security Cameras and IoT Devices



A Solar PoE Switch integrates a MPPT controller. It can work directly and efficiently in 12V/24V solar power system. While providing 4 PoE outputs that support the IEEE 802.3 af/at standard, the integrated MPPT controller can keep the PV panels working at their best, effectively improving the conversion efficiency of the PV system. When used in conjunction with IOT gateway, users can remotely view charging status and change charging settings via Remote Monit Cloud or third-party platforms.

### Outstanding Features

- **Solar PoE Switch:** Industrial PoE Switch with built-in MPPT solar charge controller, working directly with PV solar panels (Max. 300W) and batteries to supply non-stop PoE power for security cameras, Wireless bridges, LED lights, etc.
- **Smart Battery Management:** Local battery status LED indicator and remotely battery management, compatible to battery types (Lead Acid, Gel, AGM, Lithium, LiFePO4 Lithium, etc. ). Automatically detects 12V or 24V DC system voltages (for Non-Lithium battery types). 10A output current.
- **99% Efficient Charging:** MPPT (Maximum Power Point Tracker) charging technology with up to 99% tracking efficiency and 98% peak PV conversion efficiency. It is much better than traditional PWM controllers, especially in cloudy days.
- **5-Port Full Gigabit PoE Switch:** Provide 4 IEEE802.3af/at 30W POE ports and 1 Gigabit uplink; All ports 10/100/1000Mbps self-adaptive full duplex; Total POE budget is 120W@24V or 60W@12V.
- **Remote Monitoring via RS485:** Supports RS485 ModBus for remote monitor and control, enabling you to monitor the status of your solar panels/solar trailers/solar powered cameras on the go. It can be managed in Linovision RemoteMonit Cloud Platform (bundle with IOT-C101 or IOT-R51W Gateway).

## Specification

Mechanical	
Enclosure Material	Aluminium
Weight	1.34lb.(0.61kg)
Dimension	4.13*4.13*2.16"(105*105*55mm)
Storage Temperature	-40°F to 185°F(-40°C to +85°C )
Operating Temperature	-40°F to 131°F(-40°C to +55°C )
Relative Humidity	5% to 95% non-condensing
Interface	
Network	4 * 10/100/1000 Mbps RJ45 PoE Ports
	1 * 10/100/1000 Mbps RJ45 Uplink Port
Serial Communication	1 * 9600bps RS485
Battery	1 * Male XT60 Connector
Load	1 * Male M12 2 Pin Waterproof Connector
PV Panel	1 * Female MC4 Connector to PV+
	1 * Male MC4 Connector to PV-
Ethernet	
MAC Address Table	8K
Packet buffer	1Mbits
Packet Length:	10Kbytes
Switching Capacity	10Gbps
PoE Standard	IEEE 802.3 af/at
PoE Mode	Mode B
PoE Budget	60W (12V System Voltage)
	120W (24V System Voltage)
Solar	
Charging Mode	Max Power Point Tracking
Battery Type	Lead Acid, Gel, AGM, Lithium, LiFePO4 Lithium, etc (Default set to 4s LiFePO4 Lithium, Voltage 11.2V ~ 14.4V)
MAX PV Panel Output Power	170W(12V System Voltage)
	340W(24V System Voltage)
MAX PV Panel Open Circuit Voltage	30V (12V System Voltage)
	60V (24V System Voltage)
MAX Charging Current	10A
Discharge Mode	Manually, Day/Night Auto Switch, Schedule
Output Voltage	Battery Voltage
Max Output Current	5A
Typical Efficiency	>98%
Self Consumption	<1.2W

## Package contents



DC Extension Cable



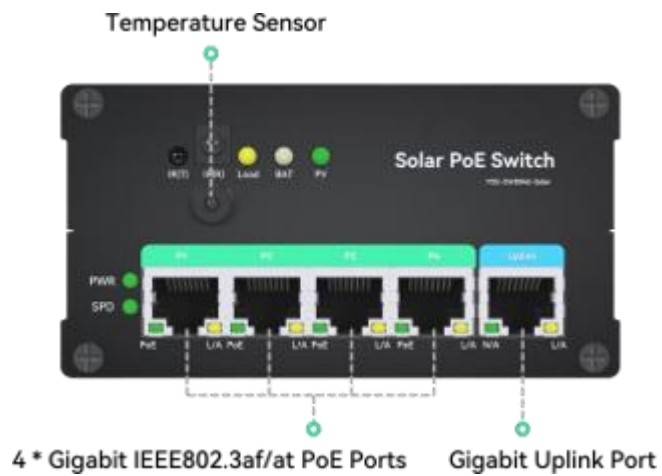
Battery Connection  
Extension Cable



User Manual

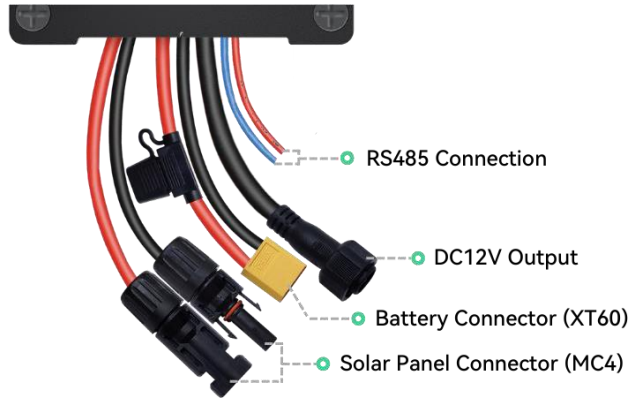
## Interface

### Front View

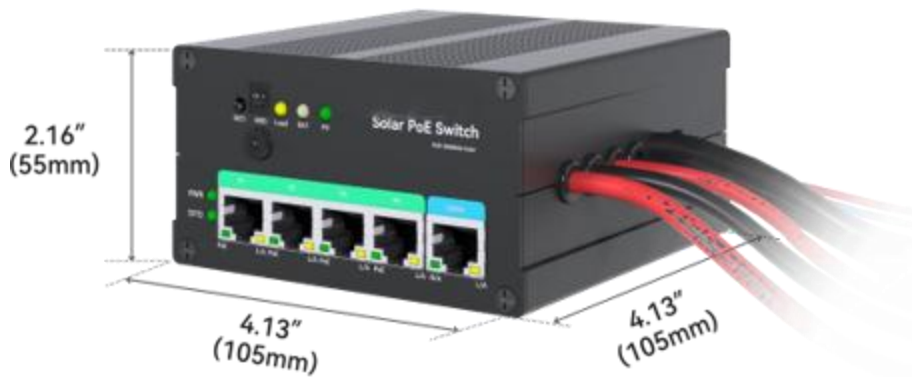


## Interface (Continued)

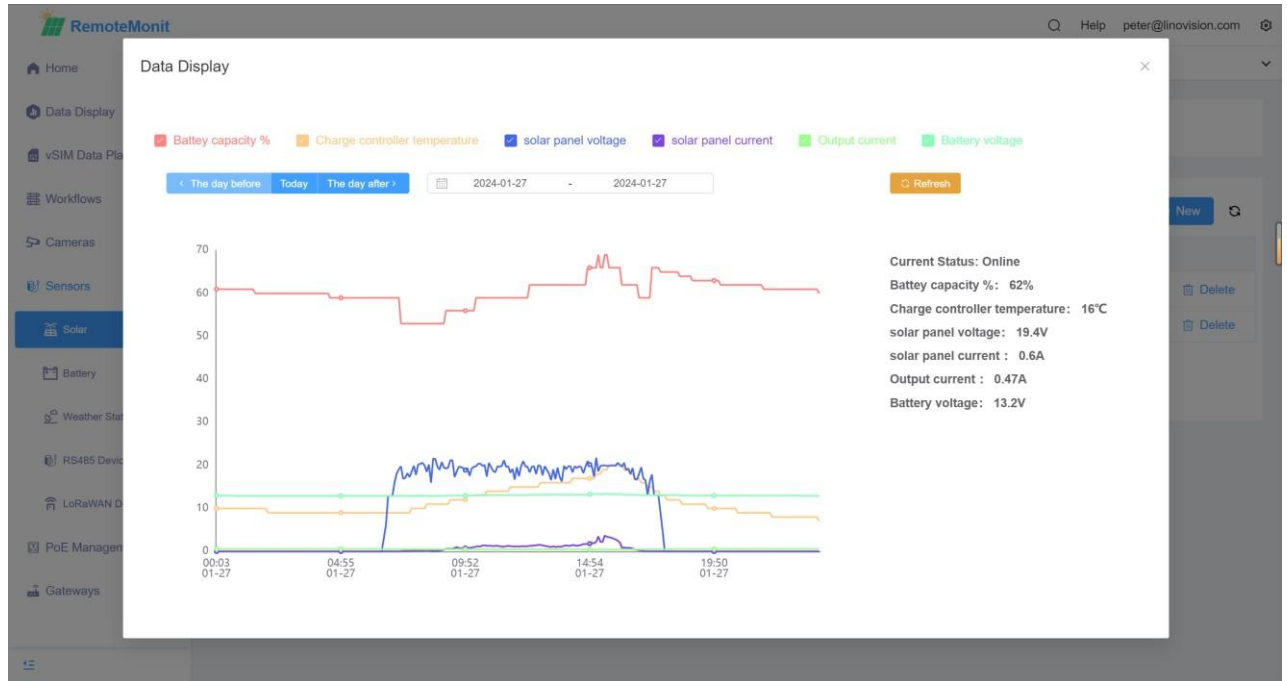
### Side View



### Dimension



## RemoteMonit CLOUD



*\*Disclaimer : Technical specifications may subject to change without prior notice.*