

DIREKTRONIK

e-mail: info@direktronik.se

tel: 08-52 400 700 fax: 08-520 18121

USB 2.0 Link Cable

Version 1.0

User Manual

User's Manual

USB 2.0 Link Cable

Introduction

This product provides an USB-based networking solution for two or more USB hosts of PC/Notebook. It can auto detect and switch method between USB High-Speed(HS) and Full-Speed (FS) and supports a user-friendly oriented host-to-host networking application via both USB2.0 and USB1.1 interfaces.

Package Content

- Hardware: USB Link Cable
- Software: Driver CD
- User's Manual

Product Features

- USB Specification revision 2.0 Compliant
- Proprietary auto detecting and switching design to support three kinds of transfer operation – “HS vs. HS”, “HS vs. FS”, “FS vs. FS”
- Built-in high-performance micro-controller for USB interface and flow control
- Built-in Clock Synthesizer for using low-cost 12Mhz crystal or external 12Mhz clock sources

System Requirements

- IBM PC 486DX4-100 MHz CPU or higher or compatible system
- Available USB port
- CD-ROM drive
- Windows 98 SE/Windows ME/Windows 2000/Windows XP

Driver Installation

USB 2.0 Link cable provides two software solutions in one installation package, i.e., "USB Super Link" and "USB Virtual Network" to be optionally installed. However, these two solutions should NOT co-exist in one computer system due to operating system support and hardware limitation.

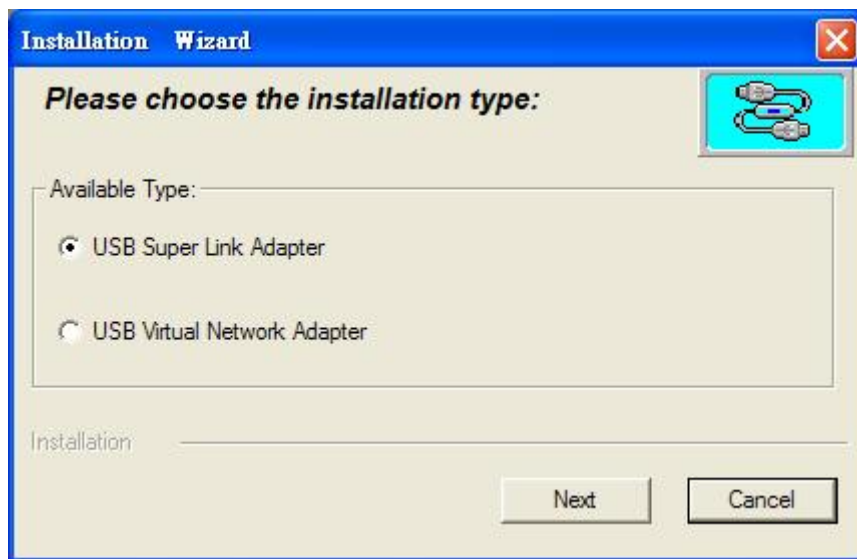
The "USB Super Link" software package provides a software tool SuperLink.exe to enable end-user being capable of accessing remote file data in remote computer's storage device(s) through a simple drag & drop procedure. While the "USB Virtual Network" software package is developed to be an NDIS-compliant solution by emulating a virtual LAN interoperability among peer-to-peer end-users' computers.

This package provides setup utility to automatically install/uninstall/update the driver. User also can use Windows' installation wizard to install/uninstall/update driver. The following steps teach user how to use the setup utility.

The first step is to double click the self-extract compressed file to extract the installation scripts to an assigned sub-directory.

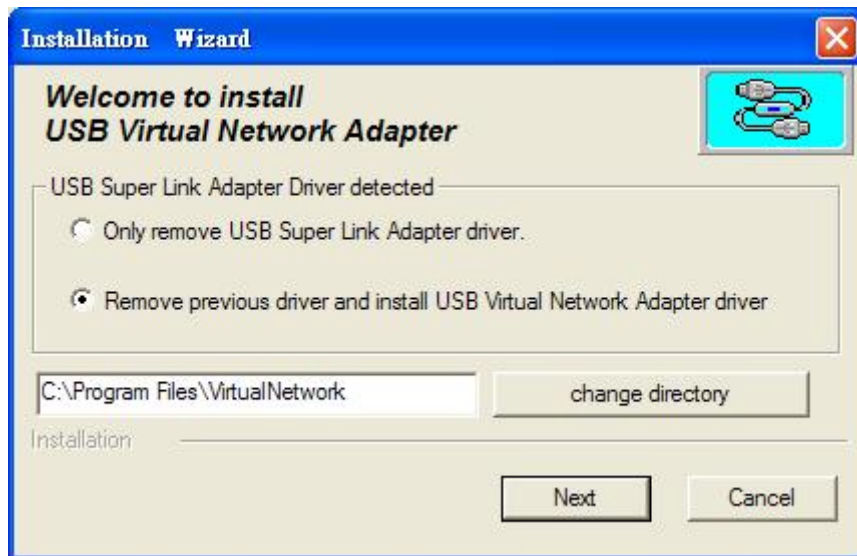
Run setup utility from the "ULK1200" directory.

The setup utility is developed to be able to install/uninstall and switch between "Virtual Network" or "Super Link" drivers support. Virtual Network and Super Link software packages are different types of driver solutions to support USB 2.0 Link Cable product. To prevent any unnecessary system confusion and mis-operation, the setup utility will automatically detect whether any prior version of "Virtual Network" or "Super Link" drivers has been installed, and ask end-user to select his target application usage from beginning.



Install Virtual Network solution

- 1) Run setup.exe
 - a) Select "USB Virtual Network Adapter"
 - b) If it is the first time to install Virtual Network, the default option is just to install Virtual Network.
 - c) If Virtual Network has been installed, there will be an option item prompting up to ask user whether to reinstall or to remove(uninstall) Virtual Network. Please choose one option.
 - d) If Super Link has been installed, there will be an option item prompting up to ask user whether to only remove Super Link, or to remove Super Link and install Virtual Network . Please choose one option as needed.



- 2) Click button "Next".
- 3) Click button "Finish" to complete the installation.
- 4) If user chooses to install Virtual Network in step 1), then plugging USB Link Cable module into the USB port of both PCs.

For Windows 2000 and Windows XP, it is to be noted that user should click "Next" directly, when the O.S. reminds user that the provided drivers doesn't have a digital signature.

- 5) Wait for system to generate IP address. This action will usually take around 30 seconds, depending on overall system configuration applied.
Under Windows 98 during System generating IP address, System will be busy about 30 seconds, please be patient.
Under Windows Me/2000/XP during System generating IP address, the IP address is 0.0.0.0, please be patient until the real IP address is generated.

Install Super Link solution

- 1) Run setup.exe
 - a) Select "USB Super Link Adapter"
 - b) If it is the first time to install Super Link, the default option is just to install Super Link.
 - c) If Super Link has been installed, there will be an option item prompting up to ask user whether to reinstall or to remove(uninstall) Super Link. Please choose one option.
 - d) If Virtual Network has been installed, there will be an option item prompting up to ask user whether to only remove Virtual Network or to remove Virtual Network and install Super Link. Please choose one option.
- 2) Choose the Super Link application executable file (with path).
- 3) Click button "Next".
- 4) Click button "Finish" to complete installation.
- 5) If user chooses to install Super Link in step 1), then plugging USB 2.0 Link Cable into the USB port of both PCs.

For Windows XP, it is to be noted that user should click "Next" directly, when the system O.S. reminds user that the provided drivers doesn't have a digital signature.